

# Monthly Treasury Statement

## Receipts and Outlays of the United States Government

For Fiscal Year 2024 Through August 31, 2024, and Other Periods





### Highlight

August has been a deficit month 69 times out of 70 fiscal years because there are no major tax due dates in this month.

Outlays for military active duty and retirement, veterans' benefits, Supplemental Security Income, and Medicare payments to health maintenance organizations and prescription drug plans accelerated into August, because September 1, 2024, the normal payment date, fell on a non-business day.

## Contents

Summary.....	Page 5
Receipts.....	Page 10
Outlays.....	Page 11
Means of Financing.....	Page 25
Receipts/Outlays by Month.....	Page 35
Federal Trust Funds/ Securities.....	Page 37
Receipts by Source/Outlays by Function.....	Page 38
Explanatory Notes.....	Page 39

## Introduction

The *Monthly Treasury Statement of Receipts and Outlays of the United States Government (MTS)* is prepared by the Bureau of the Fiscal Service, Department of the Treasury and, after approval by the Fiscal Assistant Secretary of the Treasury, is normally released on the 8th workday of the month following the reporting month. The publication is based on data provided by Federal entities, disbursing officers, and Federal Reserve banks.

### AUDIENCE

The *MTS* is published to meet the needs of those responsible for or interested in the cash position of the Treasury, those who are responsible or interested in the Government's budget results; and individuals and businesses whose operations depend upon or are related to the Government's financial operations.

### DISCLOSURE STATEMENT

This statement summarizes the financial activities of the Federal Government and off-budget Federal entities conducted in accordance with the Budget of the U.S. Government, i.e., receipts and outlays of funds, the surplus or deficit, and the means of financing the deficit or disposing of the surplus. Information is presented on a modified cash basis; receipts are accounted for on the basis of collections; refunds of receipts are treated as deductions from gross receipts; revolving and management fund receipts, reimbursements and refunds of monies previously expended are treated as deductions from gross outlays; and interest on the public debt (public issues) is recognized on the accrual basis. Major information sources include accounting data reported by Federal entities, disbursing officers, and Federal Reserve banks.

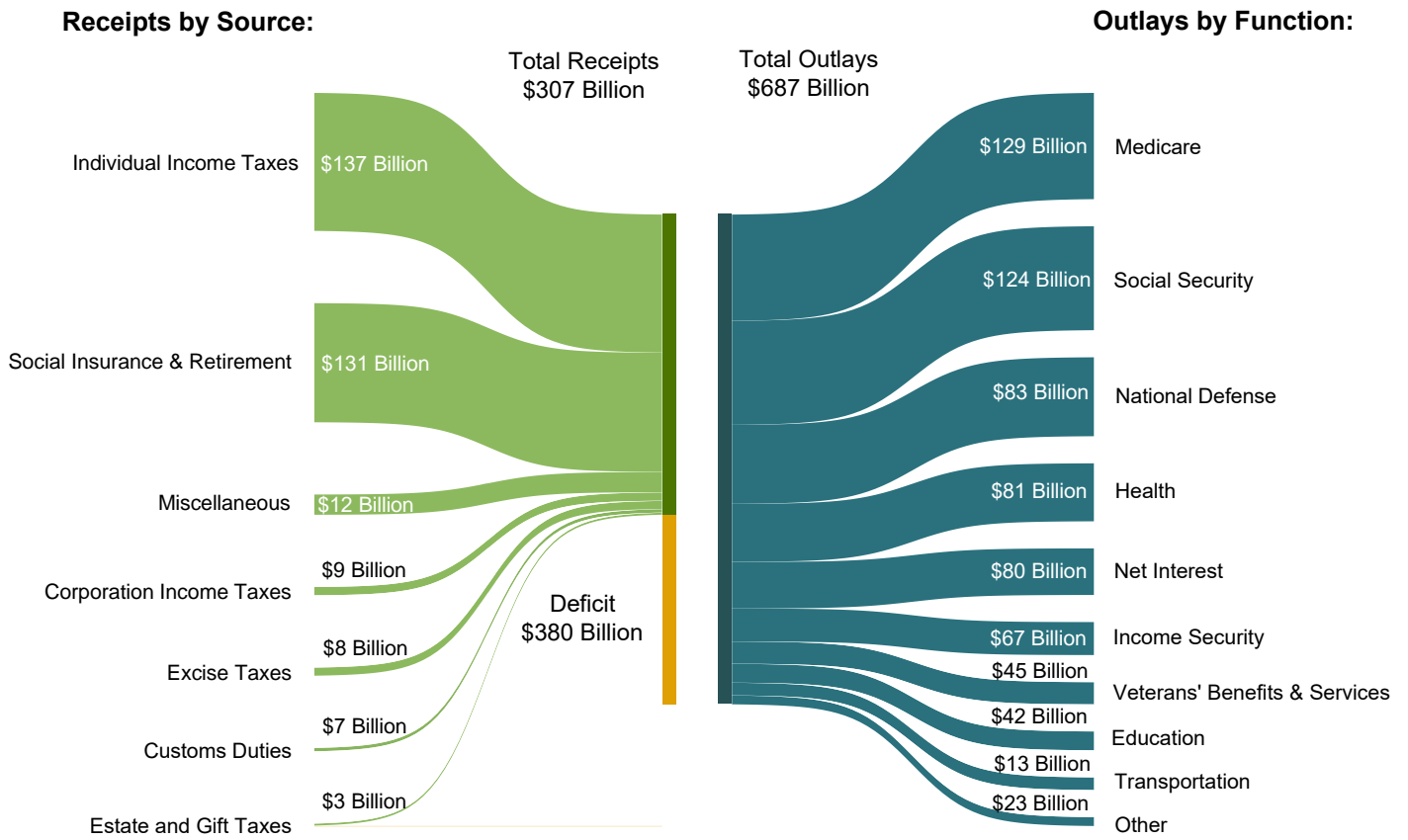
### TRIAD OF PUBLICATIONS

The *MTS* is part of a triad of Treasury financial reports. The *Daily Treasury Statement* is published each working day of the Federal Government. It provides data on the cash and debt operations of the Treasury based upon reporting of the Treasury account balances by Federal Reserve banks. The *MTS* is a report of Government receipts and outlays, based on agency reporting. The *Combined Statement of Receipts, Outlays, and Balances of the United States Government* is the official publication of the detailed receipts and outlays of the Government. It is published annually in accordance with legislative mandates given to the Secretary of the Treasury.

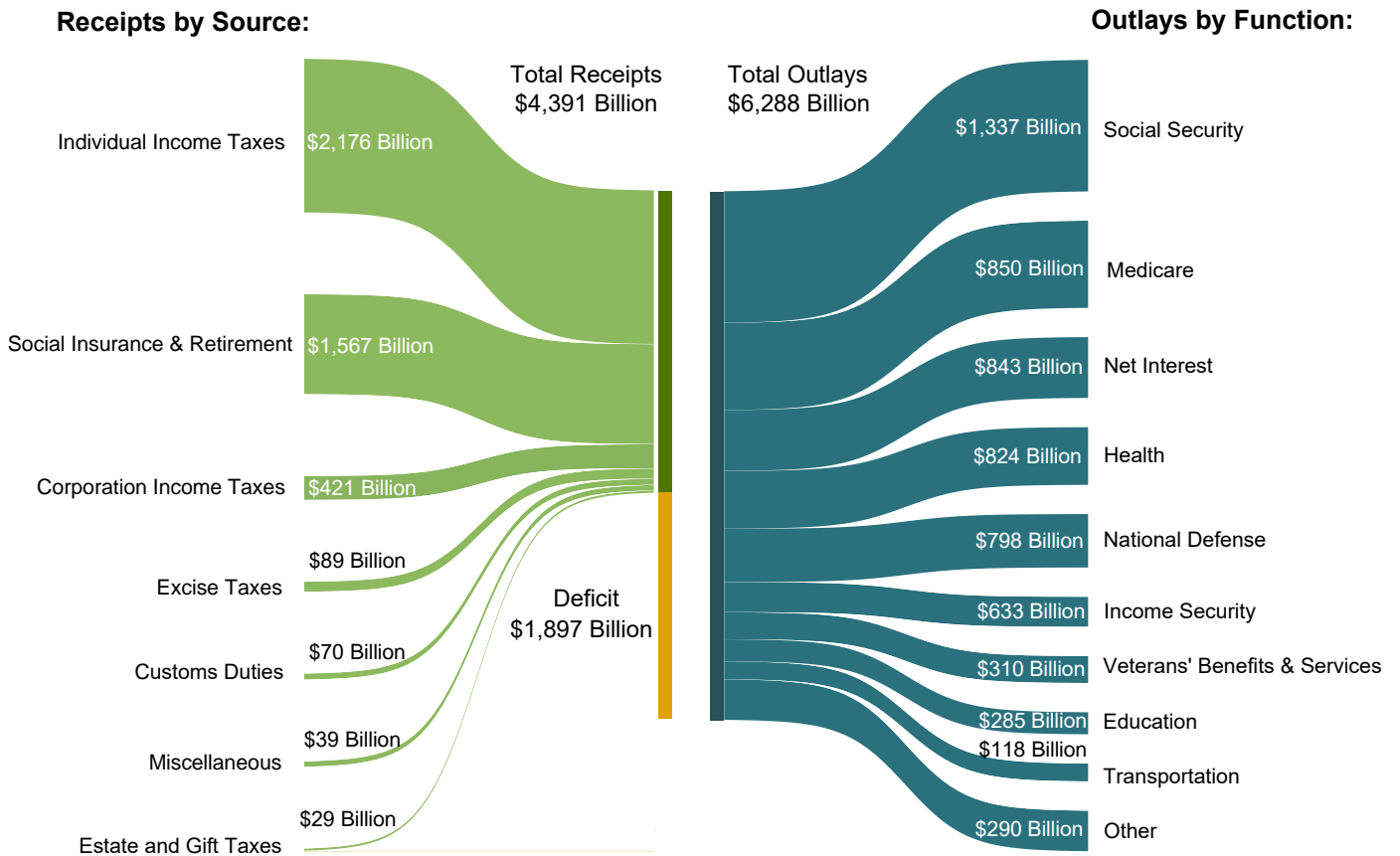
### DATA SOURCES AND INFORMATION

The Explanatory Notes section of this publication provides information concerning the flow of data into the *MTS* and sources of information relevant to the *MTS*.

**Figure 1. Receipts, Outlays, and Surplus/Deficit for August 2024**



**Figure 2. Cumulative Receipts, Outlays, and Surplus/Deficit through Fiscal Year 2024**



**Table 1. Summary of Receipts, Outlays, and the Deficit/Surplus of the U.S. Government, Fiscal Years 2023 and 2024, by Month**

[\$ millions]			
Period	Receipts	Outlays	Deficit/Surplus (-)
<b>FY 2023</b>			
October	318,500	406,374	87,874
November	252,111	500,646	248,535
December	454,942	539,943	85,001
January	447,288	486,072	38,784
February	262,114	524,548	262,434
March	313,240	691,675	378,435
April	638,520	462,340	-176,181
May	307,487	547,835	240,348
June	418,317	646,085	227,768
July	276,161	496,943	220,782
August	283,130	193,875	-89,256
September	467,475	638,190	170,715
<b>Year-to-Date</b>	<b>4,439,286</b>	<b>6,134,526</b>	<b>1,695,240</b>
<b>FY 2024</b>			
October	403,434	469,997	66,564
November	274,830	588,842	314,012
December	429,311	558,665	129,354
January	477,320	499,250	21,930
February	271,126	567,401	296,275
March	332,079	568,635	236,556
April	776,198	566,669	-209,529
May	323,647	670,778	347,131
June	466,255	537,220	70,965
July	330,377	574,119	243,741
August	306,540	686,620	380,080
<b>Year-to-Date</b>	<b>4,391,116</b>	<b>6,288,195</b>	<b>1,897,079</b>

Note: Details may not add to totals due to rounding.

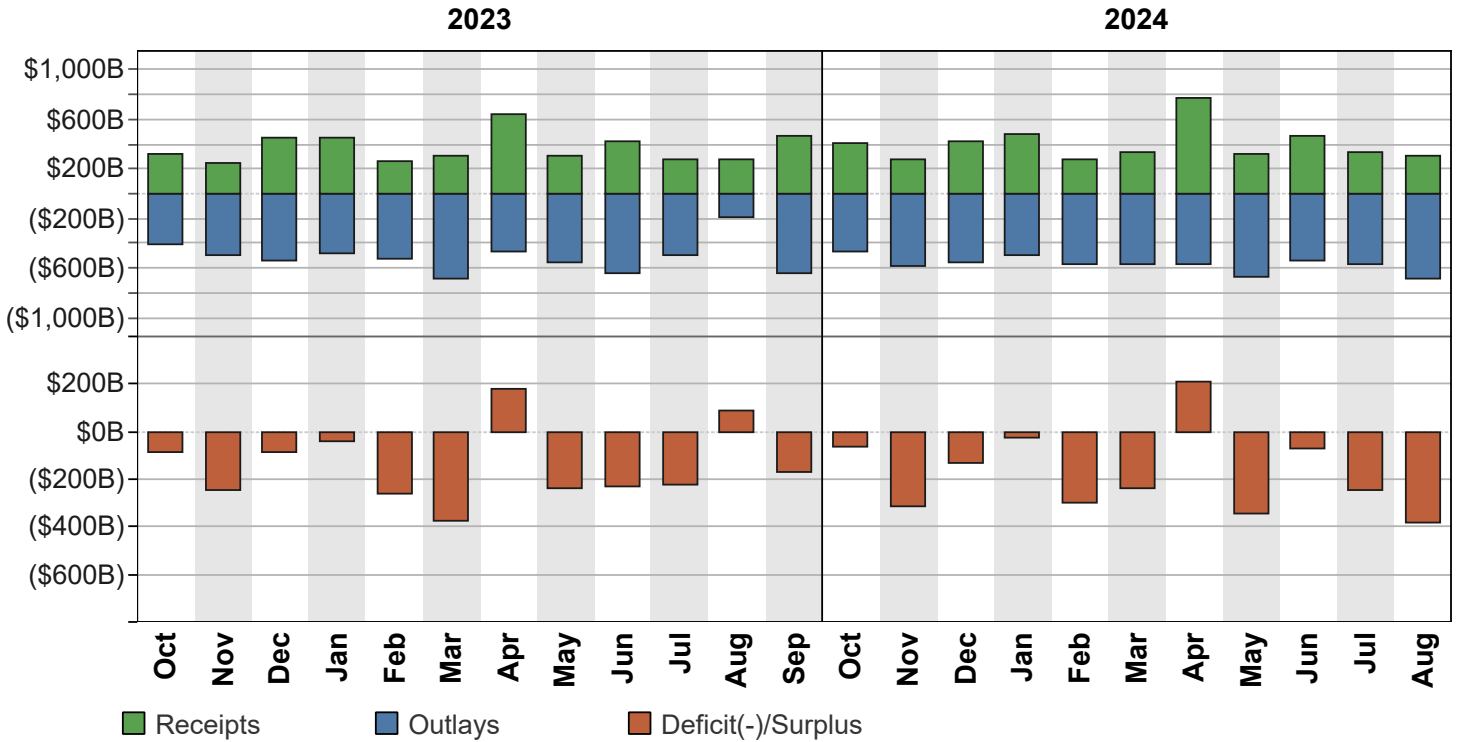
**Table 2. Summary of Budget and Off-Budget Results and Financing of the U.S. Government, August 2024 and Other Periods**

[\$ millions]					
Classification	This Month	Current Fiscal Year to Date	Budget Estimates Full Fiscal Year <sup>1</sup>	Comparable Prior Period Year to Date (2023)	Budget Estimates Next Fiscal Year (2025) <sup>1</sup>
<b>Total On-Budget and Off-Budget Results:</b>					
Total Receipts	306,540	4,391,116	5,001,091	3,971,811	5,561,646
On-Budget Receipts	209,700	3,237,431	3,742,033	2,874,984	4,255,251
Off-Budget Receipts	96,840	1,153,685	1,259,058	1,096,828	1,306,395
Total Outlays	686,620	6,288,195	6,874,608	5,496,336	7,439,295
On-Budget Outlays	563,817	5,090,879	5,559,018	4,390,519	6,035,465
Off-Budget Outlays	122,803	1,197,316	1,315,590	1,105,817	1,403,830
Total Surplus (+) or Deficit (-)	-380,080	-1,897,079	-1,873,517	-1,524,525	-1,877,649
On-Budget Surplus (+) or Deficit (-)	-354,118	-1,853,448	-1,816,985	-1,515,535	-1,780,214
Off-Budget Surplus (+) or Deficit (-)	-25,963	-43,631	-56,532	-8,990	-97,435
Total On-Budget and Off-Budget Financing	380,080	1,897,079	1,873,517	1,524,525	1,877,649
<b>Means of Financing:</b>					
Borrowing from the Public	236,307	1,816,102	1,965,673	1,698,737	1,901,128
Reduction of Operating Cash, Increase (-)	144,488	-52,623	-193,111	94,151	.....
By Other Means	-715	133,601	100,955	-268,363	-23,479

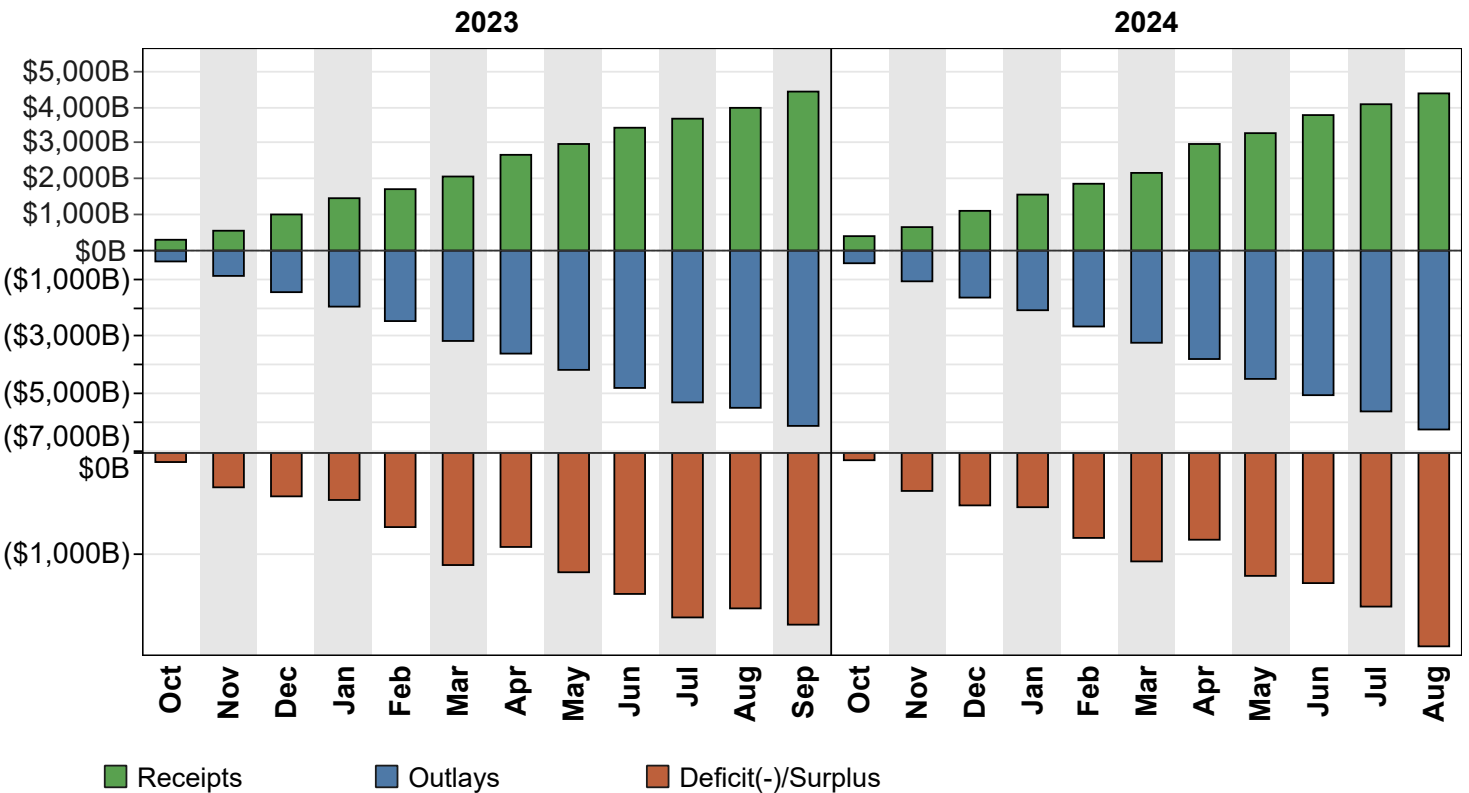
1 These estimates are based on the FY 2025 Mid-Session Review, released by the Office of Management and Budget on July 19, 2024.

Note: Details may not add to totals due to rounding.  
... No Transactions

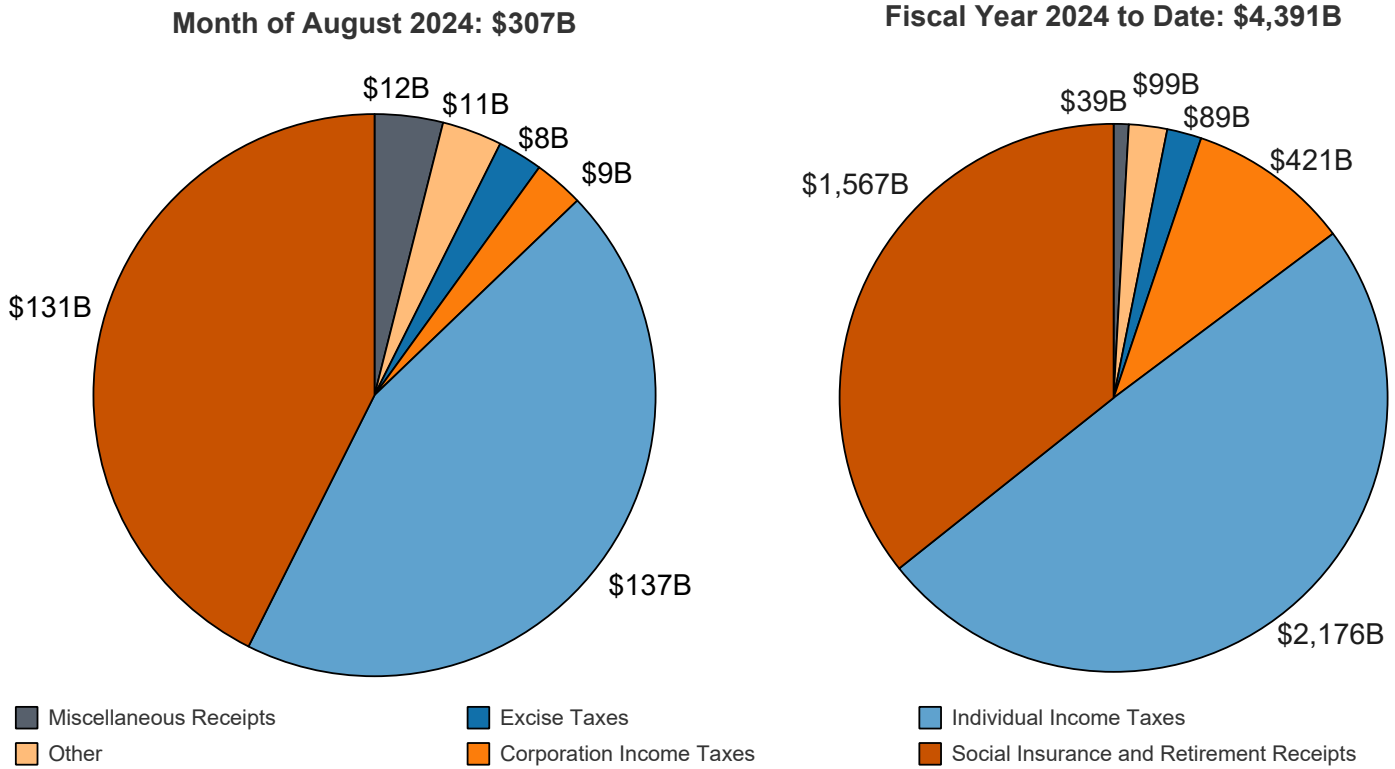
**Figure 3. Monthly Receipts, Outlays, and Budget Deficit/Surplus of the U.S. Government, Fiscal Years 2023 and 2024**



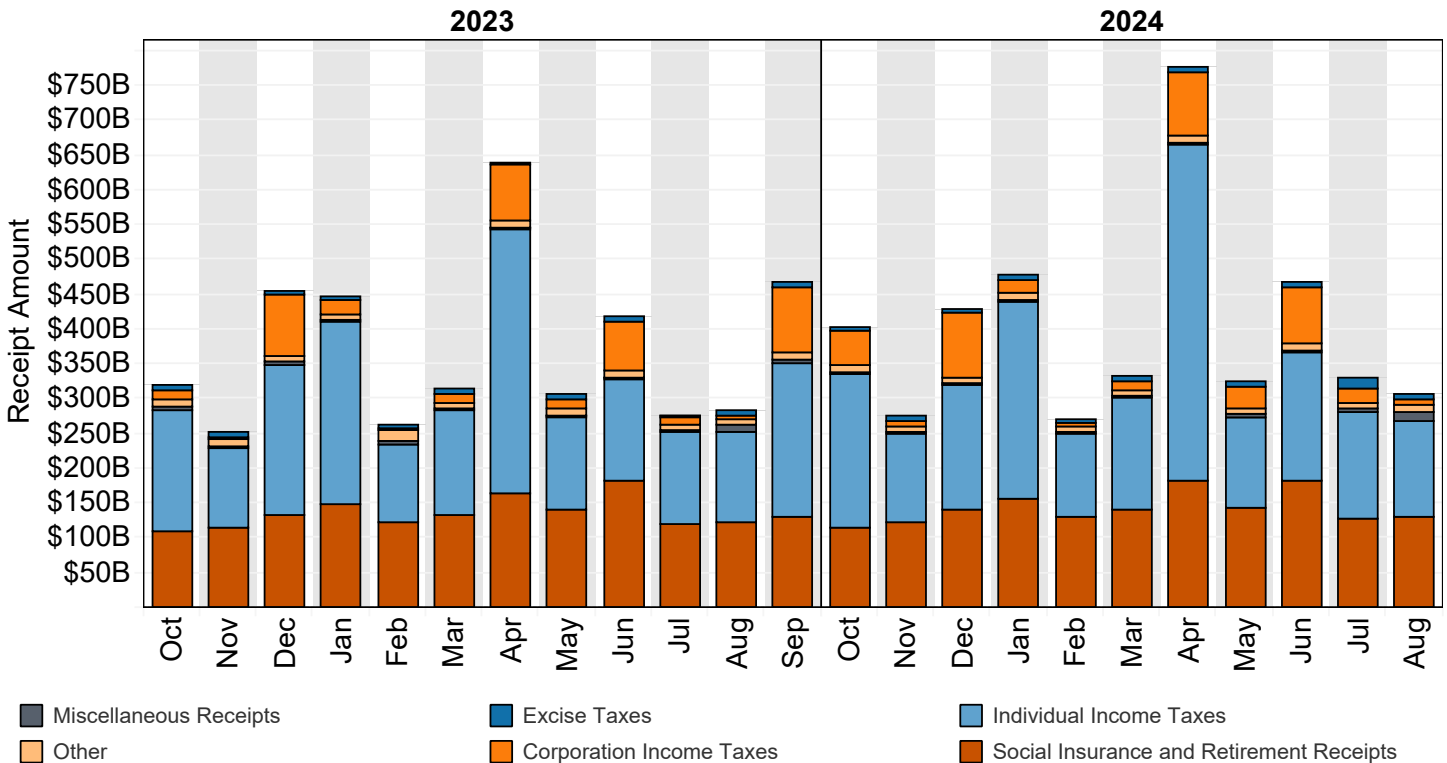
**Figure 4. Monthly Receipts, Outlays, and Budget Deficit/Surplus of the U.S. Government, Cumulative, Fiscal Years 2023 and 2024**



**Figure 5. Receipts of the U.S. Government, by Source, Fiscal Year 2024**

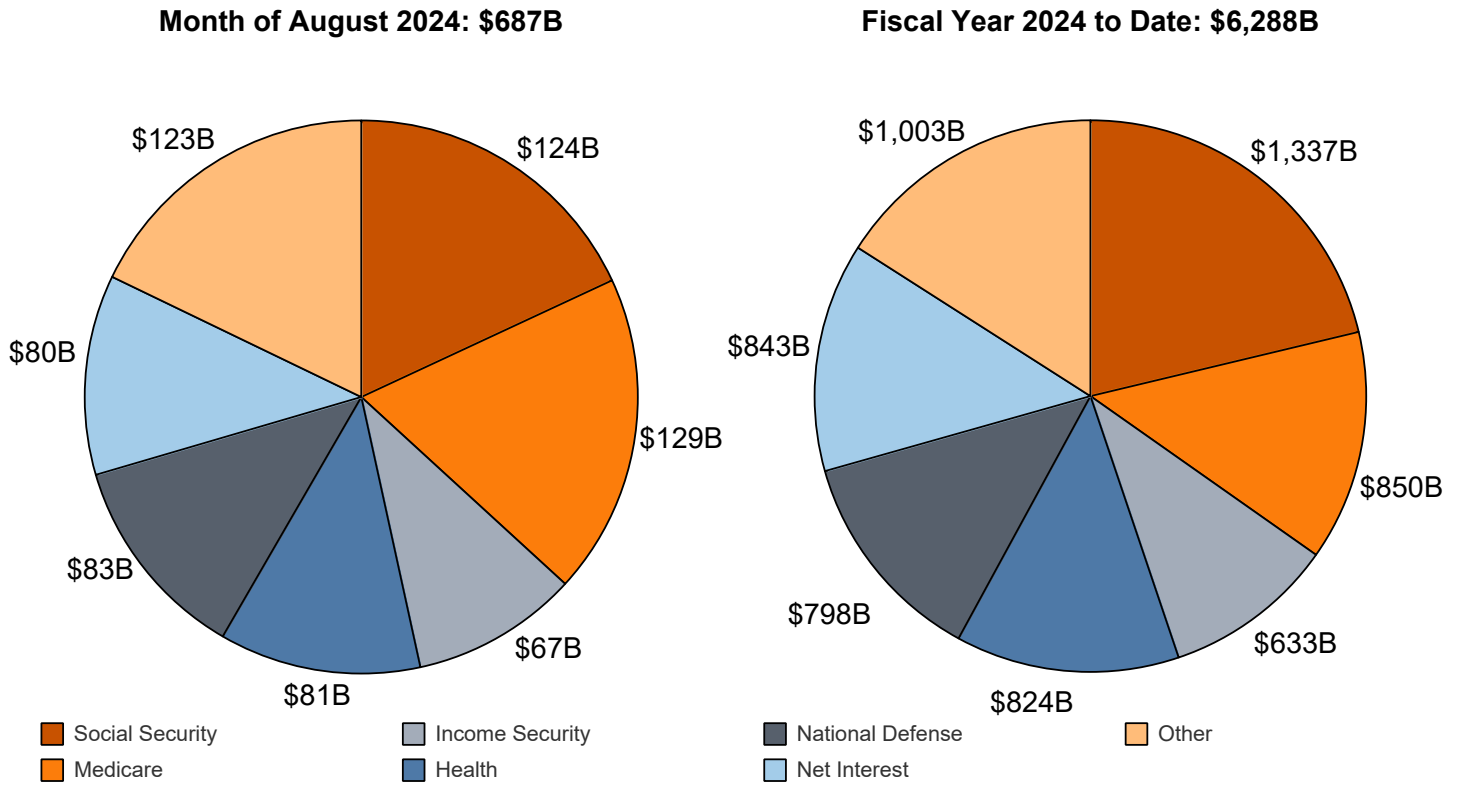


**Figure 6. Monthly Receipts of the U.S. Government, by Source, Fiscal Years 2023 and 2024**



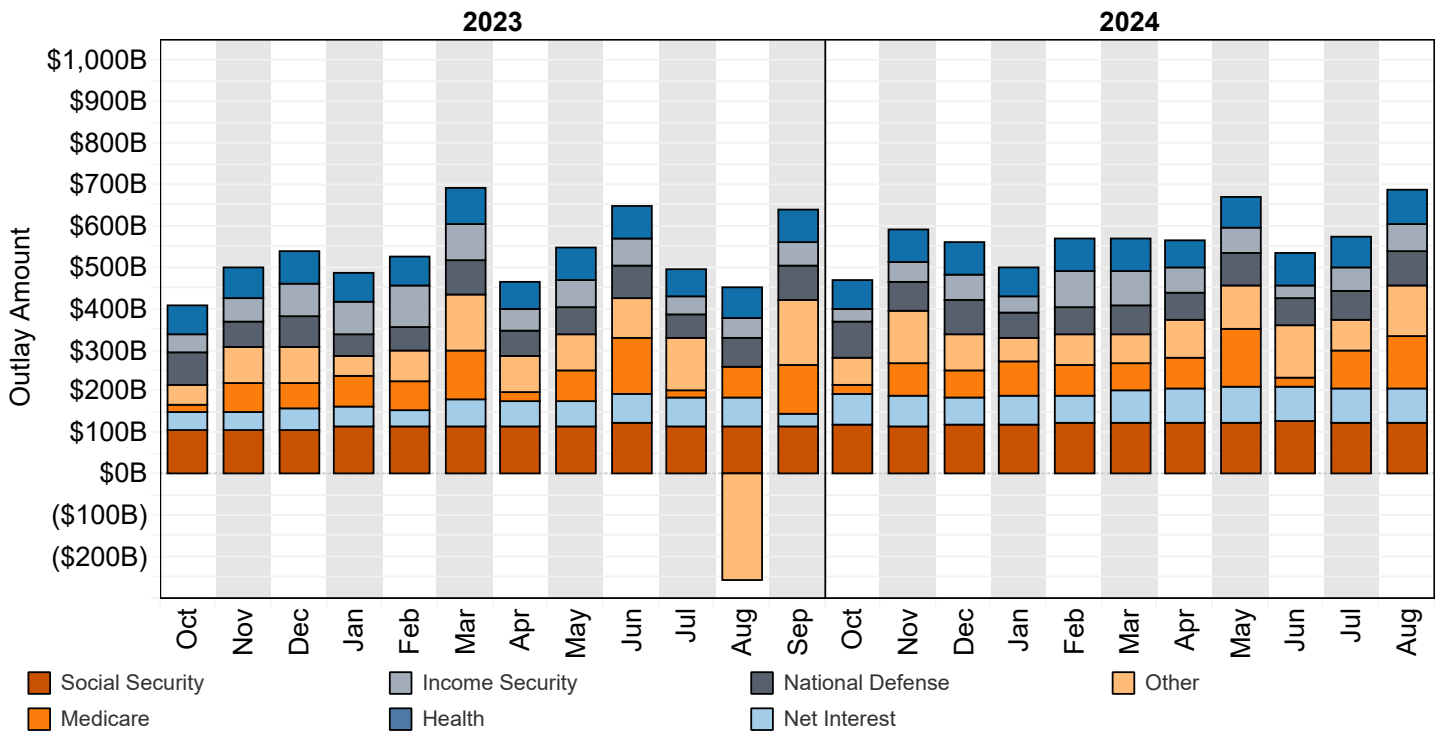
"Other" Includes: Customs Duties and Estate and Gift Taxes  
 \*Disclaimer: Other category is subject to change due to negative balances held.  
 Note: Details may not add to totals due to rounding

**Figure 7. Outlays of the U.S. Government, by Source, Fiscal Year 2024**



\*Disclaimer: Other category is subject to change due to negative balances held.

**Figure 8. Monthly Outlays of the U.S. Government, by Source, Fiscal Years 2023 and 2024**



"Other" Includes: Administration of Justice, Agriculture, Community and Regional Development, Education, Training, Employment, and Social Services, Energy, General Government, General Science, Space, and Technology, International Affairs, Natural Resources and Environment, Transportation, Undistributed Offsetting Receipts, Veterans' Benefits and Services.

Note: Details may not add to totals due to rounding



**Table 3. Summary of Receipts and Outlays of the U.S. Government, August 2024 and Other Periods**

[\$ millions]				
Classification	This Month	Current Fiscal Year to Date	Comparable Prior Period Year to Date	Budget Estimates Full Fiscal Year <sup>1</sup>
<b>Budget Receipts</b>				
Individual Income Taxes	136,645	2,176,010	1,955,460	2,417,353
Corporation Income Taxes	8,808	421,312	324,456	609,500
Social Insurance and Retirement Receipts:				
Employment and General Retirement (Off-Budget)	96,840	1,153,685	1,096,828	1,259,058
Employment and General Retirement (On-Budget)	29,122	358,235	331,901	420,595
Unemployment Insurance	3,820	47,742	49,154	49,428
Other Retirement	811	7,244	6,185	7,619
Excise Taxes	7,929	89,140	68,606	89,233
Estate and Gift Taxes	3,493	29,412	31,839	32,478
Customs Duties	7,047	69,788	73,659	76,805
Miscellaneous Receipts	12,026	38,549	33,724	39,022
<b>Total Receipts</b>	<b>306,540</b>	<b>4,391,116</b>	<b>3,971,811</b>	<b>5,001,091</b>
<b>(On-Budget)</b>	<b>209,700</b>	<b>3,237,431</b>	<b>2,874,984</b>	<b>3,742,033</b>
<b>(Off-Budget)</b>	<b>96,840</b>	<b>1,153,685</b>	<b>1,096,828</b>	<b>1,259,058</b>
<b>Budget Outlays</b>				
Legislative Branch	593	6,153	5,937	7,553
Judicial Branch	889	8,602	8,115	9,783
Department of Agriculture	14,990	192,098	213,902	237,078
Department of Commerce	1,434	12,812	11,015	20,174
Department of Defense--Military Programs	78,749	753,966	695,438	817,778
Department of Education	38,894	250,540	-64,373	
Department of Energy	4,545	45,219	29,953	47,564
Department of Health and Human Services	201,788	1,617,863	1,518,524	1,727,400
Department of Homeland Security	6,890	80,043	81,010	121,943
Department of Housing and Urban Development	6,134	47,485	50,355	52,142
Department of the Interior	359	14,456	14,012	18,115
Department of Justice	3,661	39,538	40,337	44,075
Department of Labor	11,437	61,837	85,572	63,974
Department of State	3,425	31,193	27,208	37,704
Department of Transportation	11,242	100,436	96,849	117,238
Department of the Treasury:				
Interest on Treasury Debt Securities (Gross)	92,293	1,048,589	807,836	1,157,762
Other	15,423	207,696	250,321	257,676
Department of Veterans Affairs	45,267	309,237	258,149	341,112
Corps of Engineers	1,058	10,235	8,634	
Other Defense Civil Programs	11,865	65,465	56,742	69,262
Environmental Protection Agency	1,342	11,851	11,418	11,888
Executive Office of the President	74	574	489	727
General Services Administration	234	106	-293	8
International Assistance Programs	1,771	30,249	34,025	42,195
National Aeronautics and Space Administration	2,155	22,921	22,475	25,826
National Science Foundation	1,058	8,376	7,952	9,987
Office of Personnel Management	9,686	115,795	112,955	128,803
Small Business Administration	222	32,992	25,867	33,157
Social Security Administration	134,485	1,395,268	1,290,151	1,520,079
Independent Agencies	4,419	80,899	82,743	91,387
Allowances	.....	.....	.....	-1,901
Undistributed Offsetting Receipts:				
Interest	-9,527	-179,141	-164,867	-187,500
Other	-10,237	-135,158	-122,116	-145,890
<b>Total Outlays</b>	<b>686,620</b>	<b>6,288,195</b>	<b>5,496,336</b>	<b>6,874,608</b>
<b>(On-Budget)</b>	<b>563,817</b>	<b>5,090,879</b>	<b>4,390,519</b>	<b>5,559,018</b>
<b>(Off-Budget)</b>	<b>122,803</b>	<b>1,197,316</b>	<b>1,105,817</b>	<b>1,315,590</b>
<b>Surplus (+) or Deficit (-)</b>	<b>-380,080</b>	<b>-1,897,079</b>	<b>-1,524,525</b>	<b>-1,873,517</b>
<b>(On-Budget)</b>	<b>-354,118</b>	<b>-1,853,448</b>	<b>-1,515,535</b>	<b>-1,816,985</b>
<b>(Off-Budget)</b>	<b>-25,963</b>	<b>-43,631</b>	<b>-8,990</b>	<b>-56,532</b>

<sup>1</sup> These estimates are based on the FY 2025 Mid-Session Review, released by the Office of Management and Budget on July 19, 2024.

Note: Details may not add to totals due to rounding.  
... No Transactions

**Table 4. Receipts of the U.S. Government, August 2024 and Other Periods**

[\$ millions]

Classification	This Month			Current Fiscal Year to Date			Prior Fiscal Year to Date		
	Gross Receipts	Refunds (Deduct)	Receipts	Gross Receipts	Refunds (Deduct)	Receipts	Gross Receipts	Refunds (Deduct)	Receipts
<b>Individual Income Taxes</b>									
Withheld	129,602			1,627,478			1,571,055		
Presidential Election Campaign Fund	(**)			21			22		
Other	13,817			840,352			750,008		
<b>Total -- Individual Income Taxes</b>	<b>143,419</b>	<b>6,775</b>	<b>136,645</b>	<b>2,467,851</b>	<b>291,841</b>	<b>2,176,010</b>	<b>2,321,085</b>	<b>365,625</b>	<b>1,955,460</b>
<b>Corporation Income Taxes</b>									
	<b>9,676</b>	<b>869</b>	<b>8,808</b>	<b>455,014</b>	<b>33,702</b>	<b>421,312</b>	<b>361,874</b>	<b>37,418</b>	<b>324,456</b>
<b>Social Insurance and Retirement Receipts:</b>									
Employment and General Retirement:									
Federal Old-Age and Survivors Insurance Trust Fund:									
Federal Insurance Contributions Act Taxes	81,847	.....	81,847	914,502	.....	914,502	859,850	.....	859,850
Self-Employment Contributions Act Taxes	935	.....	935	45,654	.....	45,654	39,924	.....	39,924
Adjustments Attributable to Prior Years-FICA	.....	.....	.....	23,113	.....	23,113	39,365	.....	39,365
Adjustments Attributable to Prior Years-SECA	.....	.....	.....	2,933	.....	2,933	-1,556	.....	-1,556
<b>Total -- Federal Old-Age and Survivors Insurance Trust Fund</b>	<b>82,782</b>	<b>.....</b>	<b>82,782</b>	<b>986,202</b>	<b>.....</b>	<b>986,202</b>	<b>937,583</b>	<b>.....</b>	<b>937,583</b>
Federal Disability Insurance Trust Fund:									
Federal Insurance Contributions Act Taxes	13,899	.....	13,899	155,293	.....	155,293	146,015	.....	146,015
Self-Employment Contributions Act Taxes	159	.....	159	7,752	.....	7,752	6,780	.....	6,780
Adjustments Attributable to Prior Years-FICA	.....	.....	.....	3,930	.....	3,930	6,684	.....	6,684
Adjustments Attributable to Prior Years-SECA	.....	.....	.....	508	.....	508	-235	.....	-235
<b>Total -- Federal Disability Insurance Trust Fund</b>	<b>14,058</b>	<b>.....</b>	<b>14,058</b>	<b>167,483</b>	<b>.....</b>	<b>167,483</b>	<b>159,244</b>	<b>.....</b>	<b>159,244</b>
Federal Hospital Insurance Trust Fund:									
Federal Insurance Contributions Act Taxes	28,136	.....	28,136	319,934	.....	319,934	303,333	.....	303,333
Self-Employment Contributions Act Taxes	417	.....	417	22,157	.....	22,157	18,455	.....	18,455
Receipts from Railroad Retirement Board	.....	.....	.....	645	.....	645	573	.....	573
Adjustments Attributable to Prior Years-FICA	.....	.....	.....	7,204	.....	7,204	3,670	.....	3,670
Adjustments Attributable to Prior Years-SECA	.....	.....	.....	2,664	.....	2,664	-234	.....	-234
<b>Total -- Federal Hospital Insurance Trust Fund</b>	<b>28,553</b>	<b>.....</b>	<b>28,553</b>	<b>352,604</b>	<b>.....</b>	<b>352,604</b>	<b>325,797</b>	<b>.....</b>	<b>325,797</b>
Railroad Retirement:									
Rail Pension and Supplemental Annuity	309	3	306	3,357	13	3,343	3,455	12	3,443
Social Security Equivalent Account	266	3	263	2,300	12	2,288	2,668	6	2,662
<b>Total -- Employment and General Retirement</b>	<b>125,968</b>	<b>6</b>	<b>125,962</b>	<b>1,511,946</b>	<b>26</b>	<b>1,511,920</b>	<b>1,428,747</b>	<b>18</b>	<b>1,428,729</b>
Unemployment Insurance:									
Deposits by States	3,788	.....	3,788	39,596	.....	39,596	41,047	.....	41,047
Federal Unemployment Taxes	45	13	32	8,098	111	7,988	7,920	144	7,776
Railroad Unemployment Taxes	(**)	.....	(**)	159	.....	159	331	.....	331
<b>Total -- Unemployment Insurance</b>	<b>3,833</b>	<b>13</b>	<b>3,820</b>	<b>47,853</b>	<b>111</b>	<b>47,742</b>	<b>49,298</b>	<b>144</b>	<b>49,154</b>
Other Retirement:									
Federal Employees' Retirement--Employee Share	809	.....	809	7,225	.....	7,225	6,165	.....	6,165
Non-Federal Employees Retirement	2	.....	2	20	.....	20	20	.....	20
<b>Total -- Other Retirement</b>	<b>811</b>	<b>.....</b>	<b>811</b>	<b>7,244</b>	<b>.....</b>	<b>7,244</b>	<b>6,185</b>	<b>.....</b>	<b>6,185</b>
<b>Total -- Social Insurance and Retirement Receipts</b>	<b>130,611</b>	<b>19</b>	<b>130,593</b>	<b>1,567,043</b>	<b>136</b>	<b>1,566,907</b>	<b>1,484,229</b>	<b>162</b>	<b>1,484,068</b>
<b>Excise Taxes:</b>									
Miscellaneous Excise Taxes	2,032	442	1,590	32,811	-2,433	35,244	29,913	16,694	13,219
Airport and Airway Trust Fund	1,969	.....	1,969	15,504	-185	15,689	20,201	137	20,064
Highway Trust Fund	4,390	43	4,347	38,339	380	37,959	35,445	383	35,062
Black Lung Disability Trust Fund	24	.....	24	248	.....	248	262	.....	262
<b>Total -- Excise Taxes</b>	<b>8,415</b>	<b>486</b>	<b>7,929</b>	<b>86,901</b>	<b>-2,238</b>	<b>89,140</b>	<b>85,820</b>	<b>17,214</b>	<b>68,606</b>
<b>Estate and Gift Taxes</b>	<b>3,577</b>	<b>84</b>	<b>3,493</b>	<b>30,418</b>	<b>1,006</b>	<b>29,412</b>	<b>33,507</b>	<b>1,669</b>	<b>31,839</b>
<b>Customs Duties</b>	<b>7,615</b>	<b>568</b>	<b>7,047</b>	<b>76,042</b>	<b>6,255</b>	<b>69,788</b>	<b>79,533</b>	<b>5,874</b>	<b>73,659</b>
<b>Miscellaneous Receipts:</b>									
Deposit of Earnings, Federal Reserve System	292	.....	292	2,876	.....	2,876	581	.....	581
Universal Service Fund	691	.....	691	7,679	.....	7,679	7,250	.....	7,250
All Other	11,043	1	11,042	28,009	14	27,994	25,918	25	25,893
<b>Total -- Miscellaneous Receipts</b>	<b>12,026</b>	<b>1</b>	<b>12,026</b>	<b>38,564</b>	<b>14</b>	<b>38,549</b>	<b>33,749</b>	<b>25</b>	<b>33,724</b>
<b>Total -- Receipts</b>	<b>315,340</b>	<b>8,800</b>	<b>306,540</b>	<b>4,721,833</b>	<b>330,717</b>	<b>4,391,116</b>	<b>4,399,798</b>	<b>427,987</b>	<b>3,971,811</b>
<b>Total -- On-Budget</b>	<b>218,500</b>	<b>8,800</b>	<b>209,700</b>	<b>3,568,147</b>	<b>330,717</b>	<b>3,237,431</b>	<b>3,302,970</b>	<b>427,987</b>	<b>2,874,984</b>
<b>Total -- Off-Budget</b>	<b>96,840</b>	<b>.....</b>	<b>96,840</b>	<b>1,153,685</b>	<b>.....</b>	<b>1,153,685</b>	<b>1,096,828</b>	<b>.....</b>	<b>1,096,828</b>

Note: Details may not add to totals due to rounding.

(\*\*) Less than absolute value of \$500,000

... No Transactions

**Table 5. Outlays of the U.S. Government, August 2024 and Other Periods**

[\$ millions]

Classification	This Month			Current Fiscal Year to Date			Prior Fiscal Year to Date		
	Gross Outlays	Applicable Receipts	Outlays	Gross Outlays	Applicable Receipts	Outlays	Gross Outlays	Applicable Receipts	Outlays
<b>Legislative Branch:</b>									
Senate	106	(**)	106	1,107	2	1,105	1,056	2	1,054
House of Representatives	152	(**)	152	1,792	4	1,787	1,689	3	1,685
Joint Items	2	.....	2	19	.....	19	19	.....	19
Capitol Police	91	.....	91	694	.....	694	609	.....	609
Congressional Budget Office	5	.....	5	60	.....	60	58	.....	58
Architect of the Capitol	68	1	67	750	8	743	889	7	882
Library of Congress	63	2	61	809	10	799	775	9	766
Government Publishing Office	24	.....	24	95	.....	95	56	.....	56
Government Accountability Office	71	.....	71	768	.....	768	720	.....	720
United States Tax Court	7	.....	7	56	.....	56	53	.....	53
Other Legislative Branch Agencies	6	.....	6	69	.....	69	73	.....	73
Proprietary Receipts from the Public	.....	-2	2	.....	34	-34	.....	32	-32
Intrabudgetary Transactions	(**)	.....	(**)	-7	.....	-7	-6	.....	-6
<b>Total--Legislative Branch</b>	<b>594</b>	<b>1</b>	<b>593</b>	<b>6,212</b>	<b>59</b>	<b>6,153</b>	<b>5,989</b>	<b>53</b>	<b>5,937</b>
<b>Judicial Branch:</b>									
Supreme Court of the United States	18	.....	18	133	.....	133	112	.....	112
Courts of Appeals, District Courts, and Other Judicial Services	890	.....	890	8,830	.....	8,830	8,376	.....	8,376
Other	51	.....	51	668	.....	668	615	.....	615
Proprietary Receipts from the Public	.....	15	-15	.....	112	-112	.....	145	-145
Intrabudgetary Transactions	-54	.....	-54	-918	.....	-918	-842	.....	-842
<b>Total--Judicial Branch</b>	<b>905</b>	<b>15</b>	<b>889</b>	<b>8,713</b>	<b>112</b>	<b>8,602</b>	<b>8,260</b>	<b>145</b>	<b>8,115</b>
<b>Department of Agriculture:</b>									
Agricultural Research Service	173	.....	173	1,717	.....	1,717	1,615	.....	1,615
National Institute of Food and Agriculture:									
Research and Education Activities	110	.....	110	967	.....	967	878	.....	878
Extension Activities	57	.....	57	584	.....	584	561	.....	561
Other	18	.....	18	155	.....	155	139	.....	139
Animal and Plant Health Inspection Service	217	.....	217	2,171	.....	2,171	1,694	.....	1,694
Food Safety and Inspection Service	104	.....	104	1,119	.....	1,119	1,115	.....	1,115
Agricultural Marketing Service	342	2	340	3,067	33	3,034	2,087	31	2,056
Risk Management Agency:									
Administrative and Operating Expenses	6	.....	6	68	.....	68	63	.....	63
Federal Crop Insurance Corporation Fund	1,397	618	779	20,085	6,958	13,127	22,204	6,493	15,711
Farm Service Agency:									
Salaries and Expenses	129	.....	129	1,089	.....	1,089	1,029	.....	1,029
USDA Supplemental Assistance	(**)	.....	(**)	4	.....	4	3	.....	3
Agricultural Disaster Relief Fund	(**)	.....	(**)	(**)	.....	(**)	(**)	.....	(**)
Commodity Credit Corporation	233	613	-380	10,827	5,133	5,694	12,192	5,125	7,068
Tobacco Trust Fund	(**)	.....	(**)	9	.....	9	11	.....	11
Agricultural Credit Insurance Fund	10	2	8	1,508	19	1,489	1,879	141	1,738
Other	13	.....	13	229	.....	229	362	.....	362
<b>Total--Farm Service Agency</b>	<b>385</b>	<b>615</b>	<b>-230</b>	<b>13,666</b>	<b>5,152</b>	<b>8,514</b>	<b>15,476</b>	<b>5,265</b>	<b>10,211</b>
Natural Resources Conservation Service:									
Conservation Operations	110	.....	110	1,000	.....	1,000	794	.....	794
Farm Security and Rural Investment Programs	334	.....	334	3,545	.....	3,545	3,076	.....	3,076
Other	77	.....	77	385	.....	385	351	.....	351
Rural Development	71	.....	71	264	.....	264	272	.....	272
Rural Housing Service:									
Rural Housing Insurance Fund	9	22	-13	1,011	356	655	469	335	134
Rental Assistance Program	137	.....	137	1,449	.....	1,449	1,301	.....	1,301
Other	29	.....	29	-62	.....	-62	434	.....	434
Rural Utilities Service:									
Rural Electrification and Telecommunications Fund	3	(**)	3	479	150	329	1,530	41	1,488
Other	85	(**)	86	1,107	20	1,087	1,015	21	994
Foreign Agricultural Service	123	.....	123	1,298	.....	1,298	2,123	.....	2,123
Food and Nutrition Service:									
Supplemental Nutrition Assistance Program	8,810	.....	8,810	97,826	.....	97,826	125,489	.....	125,489
Child Nutrition Programs	1,484	.....	1,484	30,810	.....	30,810	27,948	.....	27,948
Special Supplemental Nutrition Program for Women, Infants, and Children (WIC)	601	.....	601	6,633	.....	6,633	6,274	.....	6,274
Other	56	.....	56	632	.....	632	649	.....	649
<b>Total--Food and Nutrition Service</b>	<b>10,952</b>	<b>.....</b>	<b>10,952</b>	<b>135,900</b>	<b>.....</b>	<b>135,900</b>	<b>160,360</b>	<b>.....</b>	<b>160,360</b>

**Table 5. Outlays of the U.S. Government, August 2024 and Other Periods - Continued**

[\$ millions]

Classification	This Month			Current Fiscal Year to Date			Prior Fiscal Year to Date		
	Gross Outlays	Applicable Receipts	Outlays	Gross Outlays	Applicable Receipts	Outlays	Gross Outlays	Applicable Receipts	Outlays
<b>Department of Agriculture: - Continued</b>									
Forest Service:									
National Forest System	198	.....	198	2,309	.....	2,309	2,108	.....	2,108
Capital Improvement and Maintenance	45	.....	45	251	.....	251	178	.....	178
Wildland Fire Management	825	.....	825	4,197	.....	4,197	3,017	.....	3,017
Forest Service Permanent Appropriations	40	.....	40	552	.....	552	503	.....	503
Other	276	.....	276	2,326	.....	2,326	1,949	.....	1,949
<b>Total--Forest Service</b>	<b>1,383</b>	<b>.....</b>	<b>1,383</b>	<b>9,634</b>	<b>.....</b>	<b>9,634</b>	<b>7,755</b>	<b>.....</b>	<b>7,755</b>
Other	515	.....	515	9,828	31	9,797	3,253	25	3,228
Proprietary Receipts from the Public	(**)	389	-389	(**)	4,692	-4,692	(**)	2,396	-2,396
Intrabudgetary Transactions	-1	.....	-1	51	.....	51	-55	.....	-55
<b>Total--Department of Agriculture</b>	<b>16,636</b>	<b>1,646</b>	<b>14,990</b>	<b>209,489</b>	<b>17,391</b>	<b>192,098</b>	<b>228,510</b>	<b>14,608</b>	<b>213,902</b>
<b>Department of Commerce:</b>									
Economic Development Administration	150	.....	150	987	.....	987	861	.....	861
Bureau of the Census	140	.....	140	1,408	.....	1,408	1,551	.....	1,551
International Trade Administration	69	.....	69	555	.....	555	491	.....	491
National Oceanic and Atmospheric Administration	638	2	636	6,752	18	6,734	5,945	41	5,903
National Institute of Standards and Technology	157	.....	157	1,459	.....	1,459	1,285	.....	1,285
National Telecommunications and Information Administration	89	(**)	89	1,148	284	864	548	(**)	548
Other	40	4	35	714	65	649	463	63	400
Proprietary Receipts from the Public	.....	-159	159	.....	-164	164	.....	27	-27
Intrabudgetary Transactions	(**)	.....	(**)	-6	.....	-6	5	.....	5
Offsetting Governmental Receipts	.....	(**)	(**)	.....	1	-1	.....	3	-3
<b>Total--Department of Commerce</b>	<b>1,283</b>	<b>-152</b>	<b>1,434</b>	<b>13,016</b>	<b>203</b>	<b>12,812</b>	<b>11,149</b>	<b>135</b>	<b>11,015</b>
<b>Department of Defense--Military Programs:</b>									
Military Personnel:									
Department of the Army	8,223	.....	8,223	65,067	.....	65,067	61,472	.....	61,472
Department of the Navy	6,735	.....	6,735	54,421	.....	54,421	52,067	.....	52,067
Department of the Air Force	5,909	.....	5,909	43,048	.....	43,048	40,581	.....	40,581
Defense Agencies	.....	.....	.....	19,874	.....	19,874	10,612	.....	10,612
<b>Total--Military Personnel</b>	<b>20,867</b>	<b>.....</b>	<b>20,867</b>	<b>182,410</b>	<b>.....</b>	<b>182,410</b>	<b>164,732</b>	<b>.....</b>	<b>164,732</b>
Operation and Maintenance:									
Department of the Army	6,049	.....	6,049	67,195	.....	67,195	63,982	.....	63,982
Department of the Navy	8,030	.....	8,030	74,058	.....	74,058	68,805	.....	68,805
Department of the Air Force	7,034	.....	7,034	68,924	.....	68,924	64,305	.....	64,305
Defense Agencies	11,873	.....	11,873	90,802	.....	90,802	87,401	4	87,397
<b>Total--Operation and Maintenance</b>	<b>32,986</b>	<b>.....</b>	<b>32,986</b>	<b>300,979</b>	<b>.....</b>	<b>300,979</b>	<b>284,493</b>	<b>4</b>	<b>284,489</b>
International Reconstruction and Other Assistance:									
Department of the Army	.....	.....	.....	2	.....	2	.....	.....	.....
Procurement:									
Department of the Army	2,315	.....	2,315	22,889	.....	22,889	21,259	.....	21,259
Department of the Navy	5,048	.....	5,048	56,420	.....	56,420	54,134	.....	54,134
Department of the Air Force	4,303	.....	4,303	49,208	.....	49,208	45,217	.....	45,217
Defense Agencies	619	.....	619	7,572	.....	7,572	6,934	.....	6,934
<b>Total--Procurement</b>	<b>12,286</b>	<b>.....</b>	<b>12,286</b>	<b>136,088</b>	<b>.....</b>	<b>136,088</b>	<b>127,545</b>	<b>.....</b>	<b>127,545</b>
Research, Development, Test, and Evaluation:									
Department of the Army	1,601	.....	1,601	13,200	.....	13,200	11,791	.....	11,791
Department of the Navy	2,198	.....	2,198	24,035	.....	24,035	20,708	.....	20,708
Department of the Air Force	4,866	.....	4,866	53,754	.....	53,754	48,041	.....	48,041
Defense Agencies	2,997	.....	2,997	31,051	.....	31,051	27,866	.....	27,866
<b>Total--Research, Development, Test, and Evaluation</b>	<b>11,663</b>	<b>.....</b>	<b>11,663</b>	<b>122,040</b>	<b>.....</b>	<b>122,040</b>	<b>108,407</b>	<b>.....</b>	<b>108,407</b>
Military Construction:									
Department of the Army	198	.....	198	1,915	.....	1,915	1,553	.....	1,553
Department of the Navy	387	.....	387	3,547	.....	3,547	3,426	.....	3,426
Department of the Air Force	329	.....	329	3,183	.....	3,183	2,347	.....	2,347
Defense Agencies	229	.....	229	2,588	.....	2,588	2,330	.....	2,330
<b>Total--Military Construction</b>	<b>1,143</b>	<b>.....</b>	<b>1,143</b>	<b>11,233</b>	<b>.....</b>	<b>11,233</b>	<b>9,657</b>	<b>.....</b>	<b>9,657</b>
Family Housing:									
Department of the Army	68	.....	68	558	.....	558	428	.....	428
Department of the Navy	64	.....	64	414	.....	414	398	.....	398
Department of the Air Force	38	.....	38	351	.....	351	407	.....	407
Defense Agencies	6	.....	6	83	.....	83	77	.....	77
Revolving and Management Funds:									

**Table 5. Outlays of the U.S. Government, August 2024 and Other Periods - Continued**

[\$ millions]

Classification	This Month			Current Fiscal Year to Date			Prior Fiscal Year to Date		
	Gross Outlays	Applicable Receipts	Outlays	Gross Outlays	Applicable Receipts	Outlays	Gross Outlays	Applicable Receipts	Outlays
<b>Department of Defense--Military Programs: - Continued</b>									
Department of the Navy	5	.....	5	16	.....	16	93	.....	93
Defense Agencies:									
Working Capital Fund	-102	.....	-102	1,586	.....	1,586	96	.....	96
Other	-58	.....	-58	30	.....	30	-18	.....	-18
Trust Funds:									
Department of the Army	-2	.....	-2	28	.....	28	19	.....	19
Department of the Navy	2	.....	2	24	.....	24	28	.....	28
Department of the Air Force	(**)	.....	(**)	4	.....	4	7	.....	7
Defense Agencies	51	.....	51	487	.....	487	417	.....	417
Proprietary Receipts from the Public:									
Department of the Army	.....	-51	51	.....	19	-19	.....	170	-170
Department of the Navy	.....	2	-2	.....	153	-153	.....	105	-105
Department of the Air Force	.....	11	-11	.....	136	-136	.....	111	-111
Defense Agencies	.....	291	-291	.....	1,841	-1,841	.....	1,028	-1,028
Intrabudgetary Transactions:									
Department of the Army	(**)	.....	(**)	-90	.....	-90	-53	.....	-53
Department of the Navy	-10	.....	-10	-88	.....	-88	-66	.....	-66
Department of the Air Force	-5	.....	-5	-24	.....	-24	218	.....	218
Defense Agencies	2	.....	2	-14	.....	-14	-27	.....	-27
Offsetting Governmental Receipts:									
Department of the Army	.....	.....	.....	.....	1	-1	.....	1	-1
Defense Agencies	.....	.....	.....	.....	.....	.....	.....	1	-1
<b>Total--Department of Defense--Military Programs</b>	<b>79,002</b>	<b>253</b>	<b>78,749</b>	<b>756,115</b>	<b>2,150</b>	<b>753,966</b>	<b>696,857</b>	<b>1,419</b>	<b>695,438</b>
<b>Department of Education:</b>									
Office of Elementary and Secondary Education:									
Accelerating Achievement and Ensuring Equity	1,596	.....	1,596	17,520	.....	17,520	16,929	.....	16,929
Impact Aid	16	.....	16	1,880	.....	1,880	1,546	.....	1,546
Education Improvement Programs	440	.....	440	5,525	.....	5,525	5,247	.....	5,247
Other	6,183	.....	6,183	51,554	.....	51,554	60,319	.....	60,319
<b>Total--Office of Elementary and Secondary Education</b>	<b>8,235</b>	<b>.....</b>	<b>8,235</b>	<b>76,479</b>	<b>.....</b>	<b>76,479</b>	<b>84,041</b>	<b>.....</b>	<b>84,041</b>
Office of Innovation and Improvement	97	.....	97	988	.....	988	857	.....	857
Office of English Language Acquisition	58	.....	58	825	.....	825	759	.....	759
Office of Special Education and Rehabilitative Services:									
Special Education	1,375	.....	1,375	15,209	.....	15,209	14,205	.....	14,205
Rehabilitation Services and Disability Research	342	.....	342	3,700	.....	3,700	3,140	.....	3,140
Special Institutions for Persons with Disabilities	25	.....	25	275	.....	275	280	.....	280
Office of Vocational and Adult Education	192	.....	192	2,018	.....	2,018	1,893	.....	1,893
Office of Postsecondary Education:									
Higher Education	292	.....	292	2,880	.....	2,880	2,610	.....	2,610
Other	(**)	.....	(**)	304	(**)	304	320	(**)	320
<b>Total--Office of Postsecondary Education</b>	<b>292</b>	<b>.....</b>	<b>292</b>	<b>3,185</b>	<b>(**)</b>	<b>3,184</b>	<b>2,930</b>	<b>(**)</b>	<b>2,929</b>
Office of Federal Student Aid:									
Student Financial Assistance	4,003	.....	4,003	27,590	.....	27,590	24,609	.....	24,609
Student Aid Administration	164	.....	164	1,943	.....	1,943	1,956	.....	1,956
Federal Student Loan Reserve Fund	.....	.....	.....	.....	.....	.....	56	.....	56
Federal Direct Student Loans	24,326	.....	24,326	110,176	.....	110,176	137,315	.....	137,315
Federal Family Education Loans	17	.....	17	11,976	.....	11,976	8,845	.....	8,845
Other	2	.....	2	61	3	58	75	1	74
<b>Total--Office of Federal Student Aid</b>	<b>28,512</b>	<b>.....</b>	<b>28,512</b>	<b>151,746</b>	<b>3</b>	<b>151,743</b>	<b>172,856</b>	<b>1</b>	<b>172,855</b>
Institute of Education Sciences	57	.....	57	715	.....	715	648	.....	648
Departmental Management	53	.....	53	637	.....	637	628	.....	628
Other	5	.....	5	43	.....	43	34	.....	34
Proprietary Receipts from the Public	.....	356	-356	.....	5,296	-5,296	.....	346,703	-346,703
Intrabudgetary Transactions	7	.....	7	19	.....	19	62	.....	62
<b>Total--Department of Education</b>	<b>39,250</b>	<b>356</b>	<b>38,894</b>	<b>255,839</b>	<b>5,299</b>	<b>250,540</b>	<b>282,331</b>	<b>346,704</b>	<b>-64,373</b>
<b>Department of Energy:</b>									
National Nuclear Security Administration:									
Naval Reactors	209	.....	209	1,715	.....	1,715	1,425	.....	1,425
Weapons Activities	1,765	.....	1,765	16,618	.....	16,618	15,303	.....	15,303
Defense Nuclear Nonproliferation	239	.....	239	2,448	.....	2,448	2,303	.....	2,303
Other	38	.....	38	459	.....	459	460	.....	460
Environmental and Other Defense Activities:									

**Table 5. Outlays of the U.S. Government, August 2024 and Other Periods - Continued**

[\$ millions]

Classification	This Month			Current Fiscal Year to Date			Prior Fiscal Year to Date		
	Gross Outlays	Applicable Receipts	Outlays	Gross Outlays	Applicable Receipts	Outlays	Gross Outlays	Applicable Receipts	Outlays
<b>Department of Energy: - Continued</b>									
Defense Environmental Cleanup	585	.....	585	6,744	.....	6,744	6,673	.....	6,673
Other Defense Activities	77	.....	77	930	.....	930	955	.....	955
Defense Nuclear Waste Disposal	(**)	.....	(**)	(**)	.....	(**)	(**)	.....	(**)
Energy Programs:									
Science	757	.....	757	7,476	.....	7,476	7,150	.....	7,150
Energy Supply	236	.....	236	2,192	.....	2,192	2,214	.....	2,214
Energy Efficiency and Renewable Energy	421	.....	421	3,368	.....	3,368	2,515	.....	2,515
Fossil Energy Research and Development	67	.....	67	723	.....	723	-578	.....	-578
Uranium Enrichment Decontamination and Decommissioning Fund	61	.....	61	731	.....	731	845	.....	845
Advanced Technology Vehicles Manufacturing Loan Program	1	.....	1	66	.....	66	69	.....	69
Title 17 Innovative Technology Loan Guarantee Program	5	.....	5	87	.....	87	51	.....	51
Other	267	8	259	3,563	456	3,107	-4,779	490	-5,268
Total--Energy Programs	1,815	8	1,807	18,206	456	17,749	7,486	490	6,997
Power Marketing Administration	417	399	18	5,560	4,064	1,495	4,565	4,119	446
Departmental Administration	53	.....	53	353	.....	353	317	.....	317
Proprietary Receipts from the Public	.....	76	-76	.....	1,316	-1,316	.....	2,742	-2,742
Intrabudgetary Transactions	-171	.....	-171	-1,978	.....	-1,978	-2,184	.....	-2,184
<b>Total--Department of Energy</b>	<b>5,028</b>	<b>483</b>	<b>4,545</b>	<b>51,056</b>	<b>5,837</b>	<b>45,219</b>	<b>37,305</b>	<b>7,351</b>	<b>29,953</b>
<b>Department of Health and Human Services:</b>									
Food and Drug Administration	648	(**)	647	4,440	6	4,434	3,197	8	3,190
Health Resources and Services Administration	1,233	.....	1,233	13,217	.....	13,217	14,355	.....	14,355
Indian Health Service	595	.....	595	8,129	.....	8,129	6,723	.....	6,723
Centers for Disease Control and Prevention	1,146	.....	1,146	11,075	.....	11,075	10,839	.....	10,839
National Institutes of Health	4,524	.....	4,524	43,952	.....	43,952	42,029	.....	42,029
Substance Abuse and Mental Health Services Administration	657	.....	657	8,116	.....	8,116	7,455	.....	7,455
Agency for Healthcare Research and Quality	32	.....	32	336	.....	336	314	.....	314
Centers for Medicare and Medicaid Services:									
Grants to States for Medicaid	53,854	.....	53,854	560,412	.....	560,412	566,849	.....	566,849
Payments to Health Care Trust Funds	43,427	.....	43,427	473,615	.....	473,615	439,053	.....	439,053
Children's Health Insurance Fund	1,609	.....	1,609	17,858	.....	17,858	15,721	.....	15,721
State Grants and Demonstrations	55	.....	55	541	.....	541	420	.....	420
Federal Hospital Insurance Trust Fund:									
Benefit Payments	50,336	.....	50,336	384,146	.....	384,146	353,177	.....	353,177
Administrative Expenses	321	.....	321	3,708	.....	3,708	3,508	.....	3,508
Total--Federal Hospital Insurance Trust Fund	50,657	.....	50,657	387,854	.....	387,854	356,685	.....	356,685
Health Care Fraud and Abuse Control	225	.....	225	2,430	.....	2,430	2,196	.....	2,196
Federal Supplementary Medical Insurance Trust Fund:									
Benefit Payments	68,978	.....	68,978	499,516	.....	499,516	428,434	.....	428,434
Administrative Expenses	372	.....	372	4,211	.....	4,211	3,843	.....	3,843
Medicare Prescription Drugs:									
Benefit Payments	22,932	.....	22,932	116,895	.....	116,895	98,926	.....	98,926
Total--Federal Supplementary Medical Insurance Trust Fund	92,282	.....	92,282	620,622	.....	620,622	531,203	.....	531,203
Other	26	.....	26	7,082	.....	7,082	6,217	.....	6,217
Total--Centers for Medicare and Medicaid Services	242,135	.....	242,135	2,070,413	.....	2,070,413	1,918,344	.....	1,918,344
Administration for Children and Families:									
Temporary Assistance for Needy Families	1,624	.....	1,624	16,333	.....	16,333	15,168	.....	15,168
Contingency Fund	87	.....	87	550	.....	550	574	.....	574
Payments to States for Child Support Enforcement and Family Support Programs	417	.....	417	4,086	.....	4,086	3,816	.....	3,816
Low Income Home Energy Assistance	260	.....	260	4,772	.....	4,772	5,570	.....	5,570
Refugee and Entrant Assistance	712	.....	712	6,441	.....	6,441	6,429	.....	6,429
Child Care Entitlement to States	371	.....	371	3,274	.....	3,274	3,257	.....	3,257
Payments to States for the Child Care and Development Block Grant	1,672	.....	1,672	14,684	.....	14,684	20,309	.....	20,309
Social Services Block Grant	166	.....	166	1,514	.....	1,514	1,461	.....	1,461
Children and Families Services Programs	1,175	.....	1,175	13,625	.....	13,625	13,469	.....	13,469
Payments to States for Foster Care and Adoption Assistance	916	.....	916	9,397	.....	9,397	9,110	.....	9,110
Other	90	.....	90	587	.....	587	610	.....	610
Total--Administration for Children and Families	7,489	.....	7,489	75,264	.....	75,264	79,774	.....	79,774

**Table 5. Outlays of the U.S. Government, August 2024 and Other Periods - Continued**

[\$ millions]

Classification	This Month			Current Fiscal Year to Date			Prior Fiscal Year to Date		
	Gross Outlays	Applicable Receipts	Outlays	Gross Outlays	Applicable Receipts	Outlays	Gross Outlays	Applicable Receipts	Outlays
<b>Department of Health and Human Services: - Continued</b>									
Administration for Community Living	271	.....	271	2,543	.....	2,543	2,672	.....	2,672
Departmental Management	1,310	.....	1,310	15,629	.....	15,629	32,892	.....	32,892
Other	345	.....	345	1,676	.....	1,676	815	.....	815
Proprietary Receipts from the Public	.....	15,106	-15,106	.....	162,370	-162,370	.....	160,596	-160,596
Intrabudgetary Transactions:									
Payments for Health Insurance for the Aged:									
Federal Supplementary Medical Insurance Trust Fund	-43,427	.....	-43,427	-440,452	.....	-440,452	-409,580	.....	-409,580
Payments for Tax and Other Credits:									
Federal Hospital Insurance Trust Fund	-2	.....	-2	-33,189	.....	-33,189	-29,484	.....	-29,484
Other	-62	.....	-62	-909	.....	-909	-1,218	.....	-1,218
<b>Total--Department of Health and Human Services</b>	<b>216,895</b>	<b>15,107</b>	<b>201,788</b>	<b>1,780,240</b>	<b>162,376</b>	<b>1,617,863</b>	<b>1,679,129</b>	<b>160,604</b>	<b>1,518,524</b>
<b>Department of Homeland Security:</b>									
Departmental Management and Operations	246	.....	246	2,413	.....	2,413	2,082	.....	2,082
Citizenship and Immigration Services	424	.....	424	5,132	.....	5,132	4,574	.....	4,574
United States Secret Service	-22	.....	-22	2,549	.....	2,549	2,614	.....	2,614
Transportation Security Administration	413	.....	413	6,193	.....	6,193	5,907	.....	5,907
Immigration and Customs Enforcement	786	.....	786	9,038	.....	9,038	8,386	.....	8,386
U.S. Customs and Border Protection	1,723	5	1,718	19,897	43	19,854	18,218	36	18,182
United States Coast Guard	1,231	.....	1,231	12,091	.....	12,091	10,838	.....	10,838
National Protection and Programs Directorate	207	.....	207	2,596	.....	2,596	2,354	.....	2,354
Federal Emergency Management Agency:									
Disaster Relief	3,025	.....	3,025	30,739	.....	30,739	31,903	.....	31,903
National Flood Insurance Fund	85	192	-107	1,590	2,016	-426	5,197	1,458	3,739
Other	291	.....	291	2,618	.....	2,618	1,287	.....	1,287
<b>Total--Federal Emergency Management Agency</b>	<b>3,400</b>	<b>192</b>	<b>3,208</b>	<b>34,947</b>	<b>2,016</b>	<b>32,931</b>	<b>38,387</b>	<b>1,458</b>	<b>36,929</b>
Science and Technology	83	.....	83	826	.....	826	723	.....	723
Domestic Nuclear Detection Office	29	.....	29	375	.....	375	407	.....	407
Other	51	.....	51	599	.....	599	527	.....	527
Proprietary Receipts from the Public	.....	160	-160	.....	1,245	-1,245	.....	1,048	-1,048
Intrabudgetary Transactions	52	.....	52	-359	.....	-359	564	.....	564
Offsetting Governmental Receipts	.....	1,375	-1,375	.....	12,951	-12,951	.....	12,030	-12,030
<b>Total--Department of Homeland Security</b>	<b>8,622</b>	<b>1,732</b>	<b>6,890</b>	<b>96,298</b>	<b>16,255</b>	<b>80,043</b>	<b>95,582</b>	<b>14,572</b>	<b>81,010</b>
<b>Department of Housing and Urban Development:</b>									
Public and Indian Housing Programs:									
Tenant Based Rental Assistance	2,988	.....	2,988	31,034	.....	31,034	26,791	.....	26,791
Housing Certificate Fund	(**)	.....	(**)	57	.....	57	3	.....	3
Public Housing Capital Fund	32	.....	32	595	.....	595	947	.....	947
Public Housing Operating Fund	758	.....	758	7,156	.....	7,156	6,466	.....	6,466
Revitalization of Severely Distressed Public Housing (Hope VI)	(**)	.....	(**)	3	.....	3	1	.....	1
Native American Housing Block Grant	107	.....	107	1,093	.....	1,093	932	.....	932
Other	29	.....	29	293	.....	293	225	.....	225
<b>Total--Public and Indian Housing Programs</b>	<b>3,913</b>	<b>.....</b>	<b>3,913</b>	<b>40,233</b>	<b>.....</b>	<b>40,233</b>	<b>35,365</b>	<b>.....</b>	<b>35,365</b>
Community Planning and Development:									
Housing Opportunities for Persons with AIDS	51	.....	51	447	.....	447	364	.....	364
Community Development Fund	965	.....	965	8,660	.....	8,660	7,918	.....	7,918
Home Investment Partnership Program	162	.....	162	1,326	.....	1,326	915	.....	915
Neighborhood Stabilization Program	(**)	.....	(**)	2	.....	2	5	.....	5
Homeless Assistance Grants	258	.....	258	2,969	.....	2,969	3,321	.....	3,321
Other	40	.....	40	476	.....	476	350	.....	350
<b>Total--Community Planning and Development</b>	<b>1,475</b>	<b>.....</b>	<b>1,475</b>	<b>13,881</b>	<b>.....</b>	<b>13,881</b>	<b>12,873</b>	<b>.....</b>	<b>12,873</b>
Housing Programs:									
Credit Accounts:									
FHA-Mutual Mortgage Insurance Fund, Program Account	13	.....	13	4,309	.....	4,309	1,951	.....	1,951
FHA-Mutual Mortgage Insurance Capital Reserve Account	-832	.....	-832	-26,673	.....	-26,673	-13,248	.....	-13,248
FHA-Mutual Mortgage and Cooperative Housing Insurance Fund, Liquidating Account	(**)	(**)	(**)	2	3	-1	2	3	-2
FHA-General and Special Risk Fund, Program Account	.....	.....	.....	546	.....	546	694	.....	694
FHA-General and Special Risk Fund, Liquidating Account	4	6	-2	81	126	-45	78	148	-71
Housing for the Elderly or Handicapped Fund, Liquidating Account	(**)	5	-5	2	66	-65	2	96	-94
HUD Project-Based Rental Assistance	1,352	.....	1,352	14,271	.....	14,271	13,277	.....	13,277

**Table 5. Outlays of the U.S. Government, August 2024 and Other Periods - Continued**

[\$ millions]

Classification	This Month			Current Fiscal Year to Date			Prior Fiscal Year to Date		
	Gross Outlays	Applicable Receipts	Outlays	Gross Outlays	Applicable Receipts	Outlays	Gross Outlays	Applicable Receipts	Outlays
<b>Department of Housing and Urban Development: - Continued</b>									
Home Ownership Preservation Equity Fund	.....	.....	.....	1	.....	1	.....	.....	.....
Housing for the Elderly	73	.....	73	822	.....	822	790	.....	790
Housing for Persons with Disabilities	20	.....	20	215	.....	215	203	.....	203
Other Assisted Housing Programs	2	.....	2	32	.....	32	39	.....	39
Other	7	7	(**)	55	22	34	52	21	31
<b>Total--Housing Programs</b>	<b>639</b>	<b>18</b>	<b>621</b>	<b>-6,338</b>	<b>217</b>	<b>-6,555</b>	<b>3,839</b>	<b>269</b>	<b>3,570</b>
Government National Mortgage Association:									
Guarantees of Mortgage-Backed Securities	-68	1	-69	-95	7	-102	-1,327	6	-1,333
Management and Administration	190	.....	190	2,097	.....	2,097	1,933	.....	1,933
Other	27	.....	27	349	.....	349	303	.....	303
Proprietary Receipts from the Public:									
FHA-General and Special Risk Fund	.....	16	-16	.....	2,176	-2,176	.....	1,896	-1,896
Other	.....	1	-1	.....	228	-228	.....	443	-443
Intrabudgetary Transactions	-5	.....	-5	1	.....	1	-4	.....	-4
Offsetting Governmental Receipts	.....	1	-1	.....	14	-14	.....	13	-13
<b>Total--Department of Housing and Urban Development</b>	<b>6,172</b>	<b>37</b>	<b>6,134</b>	<b>50,128</b>	<b>2,643</b>	<b>47,485</b>	<b>52,982</b>	<b>2,626</b>	<b>50,355</b>
<b>Department of the Interior:</b>									
Land and Minerals Management:									
Bureau of Land Management:									
Management of Lands and Resources	66	.....	66	1,222	.....	1,222	1,152	.....	1,152
Other	34	428	-394	445	476	-31	369	67	302
Bureau of Ocean Energy Management	12	.....	12	145	.....	145	156	.....	156
Office of Surface Mining Reclamation and Enforcement	57	.....	57	1,159	.....	1,159	706	.....	706
<b>Total--Land and Minerals Management</b>	<b>170</b>	<b>428</b>	<b>-258</b>	<b>2,972</b>	<b>476</b>	<b>2,496</b>	<b>2,383</b>	<b>67</b>	<b>2,316</b>
Water and Science:									
Bureau of Reclamation:									
Water and Related Resources	235	.....	235	2,049	.....	2,049	1,650	.....	1,650
Other	24	12	12	405	207	198	517	208	309
Central Utah Project	1	.....	1	26	.....	26	28	.....	28
United States Geological Survey	129	.....	129	1,423	.....	1,423	1,358	.....	1,358
<b>Total--Water and Science</b>	<b>390</b>	<b>12</b>	<b>377</b>	<b>3,904</b>	<b>207</b>	<b>3,697</b>	<b>3,553</b>	<b>208</b>	<b>3,345</b>
Fish and Wildlife and Parks:									
United States Fish and Wildlife Service	268	.....	268	3,397	.....	3,397	3,232	.....	3,232
National Park Service	382	(**)	382	4,031	1	4,030	3,701	1	3,699
<b>Total--Fish and Wildlife and Parks</b>	<b>650</b>	<b>(**)</b>	<b>650</b>	<b>7,427</b>	<b>1</b>	<b>7,426</b>	<b>6,932</b>	<b>1</b>	<b>6,931</b>
Indian Affairs:									
Bureau of Indian Affairs and Bureau of Indian Education	298	(**)	298	2,415	(**)	2,415	2,743	(**)	2,743
<b>Total--Indian Affairs</b>	<b>298</b>	<b>(**)</b>	<b>298</b>	<b>2,415</b>	<b>(**)</b>	<b>2,415</b>	<b>2,743</b>	<b>(**)</b>	<b>2,743</b>
Departmental Offices:									
Mineral Leasing and Associated Payments	302	.....	302	3,562	.....	3,562	4,003	.....	4,003
Other	27	.....	27	759	.....	759	803	.....	803
Insular Affairs	55	.....	55	956	.....	956	292	.....	292
Office of the Special Trustee for American Indians	8	.....	8	106	.....	106	105	.....	105
Department-Wide Programs	-276	.....	-276	2,312	.....	2,312	2,791	.....	2,791
<b>Total--Departmental Offices</b>	<b>116</b>	<b>.....</b>	<b>116</b>	<b>7,695</b>	<b>.....</b>	<b>7,695</b>	<b>7,993</b>	<b>.....</b>	<b>7,993</b>
Other	188	.....	188	1,851	.....	1,851	3,461	.....	3,461
Proprietary Receipts from the Public	.....	849	-849	.....	9,656	-9,656	.....	11,840	-11,840
Intrabudgetary Transactions	-164	.....	-164	-1,460	8	-1,468	-935	4	-938
<b>Total--Department of the Interior</b>	<b>1,648</b>	<b>1,289</b>	<b>359</b>	<b>24,804</b>	<b>10,348</b>	<b>14,456</b>	<b>26,131</b>	<b>12,119</b>	<b>14,012</b>
<b>Department of Justice:</b>									
General Administration	84	.....	84	1,352	.....	1,352	1,255	.....	1,255
Legal Activities and U.S. Marshals:									
General Legal Activities	199	.....	199	3,219	.....	3,219	5,337	.....	5,337
United States Attorneys	198	.....	198	2,371	.....	2,371	2,330	.....	2,330
United States Marshals Service	141	.....	141	1,639	.....	1,639	1,486	.....	1,486
Assets Forfeiture Fund	130	.....	130	1,426	.....	1,426	1,336	.....	1,336
Other	237	.....	237	2,480	.....	2,480	2,603	.....	2,603
Federal Bureau of Investigation	787	.....	787	10,131	.....	10,131	9,747	.....	9,747
Drug Enforcement Administration	248	.....	248	2,885	.....	2,885	2,726	.....	2,726
Bureau of Alcohol, Tobacco, Firearms, and Explosives	127	.....	127	1,563	.....	1,563	1,435	.....	1,435
Federal Prison System	880	39	841	8,574	412	8,162	8,023	416	7,606
Office of Justice Programs:									



**Table 5. Outlays of the U.S. Government, August 2024 and Other Periods - Continued**

[\$ millions]

Classification	This Month			Current Fiscal Year to Date			Prior Fiscal Year to Date		
	Gross Outlays	Applicable Receipts	Outlays	Gross Outlays	Applicable Receipts	Outlays	Gross Outlays	Applicable Receipts	Outlays
<b>Department of Justice: - Continued</b>									
State and Local Law Enforcement Assistance	168	.....	168	1,809	.....	1,809	1,729	.....	1,729
Community Oriented Policing Services	52	.....	52	396	.....	396	316	.....	316
Crime Victims Fund	191	.....	191	1,985	.....	1,985	2,087	.....	2,087
Other	125	.....	125	1,318	.....	1,318	1,011	.....	1,011
Other	96	.....	96	756	.....	756	730	.....	730
Proprietary Receipts from the Public	.....	29	-29	.....	391	-391	.....	167	-167
Intrabudgetary Transactions	149	.....	149	-771	.....	-771	-488	.....	-488
Offsetting Governmental Receipts	.....	84	-84	.....	793	-793	.....	741	-741
<b>Total--Department of Justice</b>	<b>3,812</b>	<b>152</b>	<b>3,661</b>	<b>41,134</b>	<b>1,596</b>	<b>39,538</b>	<b>41,661</b>	<b>1,324</b>	<b>40,337</b>
<b>Department of Labor:</b>									
Employment and Training Administration:									
Training and Employment Services	409	.....	409	3,603	.....	3,603	3,343	.....	3,343
Office of Job Corps	151	.....	151	1,706	.....	1,706	1,629	.....	1,629
Community Service Employment for Older Americans	37	.....	37	371	.....	371	353	.....	353
Federal Unemployment Benefits and Allowances	7	.....	7	98	.....	98	170	.....	170
Federal Additional Unemployment Compensation Program-Recovery Act	38	.....	38	-1,565	.....	-1,565	-466	.....	-466
State Unemployment Insurance and Employment Service Operations	-39	.....	-39	200	.....	200	200	.....	200
Payments to the Unemployment Trust Fund	.....	.....	.....	278	.....	278	325	.....	325
Program Administration	15	.....	15	114	.....	114	110	.....	110
Unemployment Trust Fund:									
Federal-State Unemployment Insurance:									
State Unemployment Benefits	2,857	.....	2,857	33,314	.....	33,314	27,803	.....	27,803
State Administrative Expenses	462	.....	462	3,723	.....	3,723	3,924	.....	3,924
Federal Administrative Expenses	16	.....	16	427	.....	427	506	.....	506
Other	(**)	.....	(**)	40	.....	40	128	.....	128
<b>Total--Unemployment Trust Fund</b>	<b>3,335</b>	<b>.....</b>	<b>3,335</b>	<b>37,504</b>	<b>.....</b>	<b>37,504</b>	<b>32,362</b>	<b>.....</b>	<b>32,362</b>
Other	.....	.....	.....	(**)	.....	(**)	-92	.....	-92
<b>Total--Employment and Training Administration</b>	<b>3,952</b>	<b>.....</b>	<b>3,952</b>	<b>42,307</b>	<b>.....</b>	<b>42,307</b>	<b>37,933</b>	<b>.....</b>	<b>37,933</b>
Pension Benefit Guaranty Corporation	7,873	1,218	6,655	21,059	7,700	13,359	51,121	8,648	42,473
Office of Workers' Compensation Programs:									
Special Benefits	347	.....	347	831	.....	831	468	.....	468
Energy Employees Occupational Illness Compensation Fund	277	.....	277	2,491	.....	2,491	1,971	.....	1,971
Special Benefits for Disabled Coal Miners	3	.....	3	37	.....	37	40	.....	40
Black Lung Disability Trust Fund	-21	.....	-21	145	.....	145	173	.....	173
Other	23	.....	23	314	.....	314	324	.....	324
Wage and Hour Division	29	.....	29	285	.....	285	285	.....	285
Occupational Safety and Health Administration	60	.....	60	612	.....	612	610	.....	610
Mine Safety and Health Administration	25	.....	25	349	.....	349	351	.....	351
Bureau of Labor Statistics	63	.....	63	599	.....	599	544	.....	544
Departmental Management	64	.....	64	685	.....	685	581	.....	581
Other	25	.....	25	373	.....	373	354	.....	354
Proprietary Receipts from the Public	.....	15	-15	.....	23	-23	.....	19	-19
Intrabudgetary Transactions	-52	.....	-52	-527	.....	-527	-515	.....	-515
<b>Total--Department of Labor</b>	<b>12,671</b>	<b>1,233</b>	<b>11,437</b>	<b>69,560</b>	<b>7,723</b>	<b>61,837</b>	<b>94,239</b>	<b>8,667</b>	<b>85,572</b>
<b>Department of State:</b>									
Administration of Foreign Affairs:									
Diplomatic and Consular Programs	1,110	.....	1,110	9,174	.....	9,174	9,155	.....	9,155
Educational and Cultural Exchange Programs	93	.....	93	724	.....	724	777	.....	777
Embassy Security, Construction, and Maintenance	49	.....	49	1,463	.....	1,463	1,498	.....	1,498
Payment to Foreign Service Retirement and Disability Fund	83	.....	83	159	.....	159	159	.....	159
Foreign Service Retirement and Disability Fund	99	.....	99	1,089	.....	1,089	1,048	.....	1,048
Other	209	.....	209	5,177	.....	5,177	4,560	.....	4,560
<b>Total--Administration of Foreign Affairs</b>	<b>1,643</b>	<b>.....</b>	<b>1,643</b>	<b>17,786</b>	<b>.....</b>	<b>17,786</b>	<b>17,196</b>	<b>.....</b>	<b>17,196</b>
International Organizations and Conferences	624	.....	624	2,615	.....	2,615	1,907	.....	1,907
Global Health and Child Survival	675	.....	675	8,250	.....	8,250	6,811	.....	6,811
Migration and Refugee Assistance	691	.....	691	5,619	.....	5,619	4,470	.....	4,470
International Narcotics Control and Law Enforcement	196	.....	196	1,523	.....	1,523	1,162	.....	1,162
Andean Counterdrug Programs	.....	.....	.....	(**)	.....	(**)	(**)	.....	(**)
Other	107	.....	107	836	.....	836	795	.....	795
Proprietary Receipts from the Public	.....	425	-425	.....	5,210	-5,210	.....	5,106	-5,106
Intrabudgetary Transactions	-86	.....	-86	-225	.....	-225	-27	.....	-27
<b>Total--Department of State</b>	<b>3,850</b>	<b>425</b>	<b>3,425</b>	<b>36,403</b>	<b>5,210</b>	<b>31,193</b>	<b>32,314</b>	<b>5,106</b>	<b>27,208</b>

**Table 5. Outlays of the U.S. Government, August 2024 and Other Periods - Continued**

[\$ millions]

Classification	This Month			Current Fiscal Year to Date			Prior Fiscal Year to Date		
	Gross Outlays	Applicable Receipts	Outlays	Gross Outlays	Applicable Receipts	Outlays	Gross Outlays	Applicable Receipts	Outlays
<b>Department of Transportation:</b>									
Office of the Secretary	217	.....	217	1,558	.....	1,558	1,466	.....	1,466
Federal Aviation Administration:									
Operations	-609	.....	-609	315	.....	315	1,501	.....	1,501
Airport and Airway Trust Fund:									
Grants-In-Aid for Airports	349	.....	349	3,614	.....	3,614	4,022	.....	4,022
Facilities and Equipment	235	.....	235	2,752	.....	2,752	2,728	.....	2,728
Research, Engineering, and Development	21	.....	21	210	.....	210	200	.....	200
Trust Fund Share of FAA Operations	1,600	.....	1,600	11,173	.....	11,173	9,400	.....	9,400
Total--Airport and Airway Trust Fund	2,205	.....	2,205	17,749	.....	17,749	16,350	.....	16,350
Other	280	3	276	2,772	92	2,680	3,890	73	3,817
Total--Federal Aviation Administration	1,876	3	1,873	20,836	92	20,744	21,741	73	21,668
Federal Highway Administration:									
Highway Trust Fund:									
Federal-Aid Highways	6,108	.....	6,108	46,708	.....	46,708	41,912	.....	41,912
Other	(**)	.....	(**)	3	.....	3	7	.....	7
Other Programs	796	.....	796	6,619	.....	6,619	5,239	.....	5,239
Total--Federal Highway Administration	6,904	.....	6,904	53,330	.....	53,330	47,158	.....	47,158
Federal Motor Carrier Safety Administration	89	.....	89	827	.....	827	792	.....	792
National Highway Traffic Safety Administration	122	.....	122	1,247	.....	1,247	1,134	.....	1,134
Federal Railroad Administration:									
Capital and Debt Service Grants to the National Railroad Passenger Corporation									
Other	64	.....	64	3,385	.....	3,385	3,640	.....	3,640
Total--Federal Railroad Administration	64	.....	64	3,385	.....	3,385	3,641	.....	3,641
Federal Transit Administration:									
Formula Grants	.....	.....	.....	(**)	.....	(**)	(**)	.....	(**)
Capital Investment Grants	112	.....	112	2,340	.....	2,340	1,651	.....	1,651
Transit Formula Grants	1,017	.....	1,017	10,279	.....	10,279	8,575	.....	8,575
Other	447	.....	447	5,930	.....	5,930	10,164	.....	10,164
Total--Federal Transit Administration	1,575	.....	1,575	18,549	.....	18,549	20,390	.....	20,390
Maritime Administration	403	(**)	403	1,149	7	1,143	922	6	916
Other	9	(**)	9	509	42	467	419	40	379
Proprietary Receipts from the Public	.....	11	-11	.....	624	-624	.....	539	-539
Intrabudgetary Transactions:									
Other	(**)	.....	(**)	-1	.....	-1	-3	.....	-3
Offsetting Governmental Receipts	.....	2	-2	.....	189	-189	.....	153	-153
<b>Total--Department of Transportation</b>	<b>11,259</b>	<b>17</b>	<b>11,242</b>	<b>101,390</b>	<b>954</b>	<b>100,436</b>	<b>97,660</b>	<b>811</b>	<b>96,849</b>
<b>Department of the Treasury:</b>									
Departmental Offices:									
Exchange Stabilization Fund	.....	241	-241	112	1,500	-1,388	5	1,067	-1,063
Housing and Economic Recovery Programs	(**)	.....	(**)	1	.....	1	1	.....	1
Troubled Asset Relief Program	.....	.....	.....	.....	.....	.....	115	.....	115
ESF - Economic Stabilization Program	(**)	.....	(**)	10	.....	10	11	.....	11
Air Carrier Worker Support	(**)	.....	(**)	1	.....	1	(**)	.....	(**)
Coronavirus Relief Fund	48	.....	48	505	.....	505	2,704	.....	2,704
Emergency Capital Investment Program	15	.....	15	314	.....	314	346	.....	346
Emergency Rental Assistance	-72	.....	-72	-390	.....	-390	2,995	.....	2,995
Transportation Services	2	.....	2	21	.....	21	-17	.....	-17
Other	555	.....	555	3,034	.....	3,034	3,996	.....	3,996
Bureau of the Fiscal Service:									
Payment to the Resolution Funding Corporation	.....	.....	.....	920	.....	920	920	.....	920
Financial Agent Services	118	.....	118	1,227	.....	1,227	1,037	.....	1,037
Claims, Judgements, and Relief Acts	112	.....	112	1,668	.....	1,668	1,909	.....	1,909
Other	112	.....	112	1,394	(**)	1,393	4,568	2	4,566
Total--Bureau of the Fiscal Service	343	.....	343	5,208	(**)	5,208	8,434	2	8,432
Federal Financing Bank	-96	.....	-96	-1,893	.....	-1,893	-1,611	.....	-1,611
Alcohol and Tobacco Tax and Trade Bureau:									
Salaries and Expenses	11	.....	11	133	.....	133	123	.....	123
Internal Revenue Collections for Puerto Rico	31	.....	31	363	.....	363	339	.....	339
Bureau of Engraving and Printing	-11	.....	-11	-104	.....	-104	38	.....	38
United States Mint	294	361	-66	3,345	3,478	-133	4,787	4,736	52

**Table 5. Outlays of the U.S. Government, August 2024 and Other Periods - Continued**

[\$ millions]

Classification	This Month			Current Fiscal Year to Date			Prior Fiscal Year to Date		
	Gross Outlays	Applicable Receipts	Outlays	Gross Outlays	Applicable Receipts	Outlays	Gross Outlays	Applicable Receipts	Outlays
<b>Department of the Treasury: - Continued</b>									
Internal Revenue Service:									
Taxpayer Services	319	.....	319	3,700	.....	3,700	3,490	.....	3,490
Enforcement	550	.....	550	5,737	.....	5,737	4,891	.....	4,891
Operations Support	566	.....	566	5,533	.....	5,533	4,824	.....	4,824
Build America Bond Payments, Recovery Act	296	.....	296	1,822	.....	1,822	2,252	.....	2,252
Refundable Premium Tax Credits and Cost Sharing Reductions	11,518	.....	11,518	98,322	.....	98,322	72,393	.....	72,393
Payment Where Earned Income Credit Exceeds Liability for Tax	530	.....	530	59,719	.....	59,719	55,044	.....	55,044
Payment Where Child Tax Credit Exceeds Liability for Tax	292	.....	292	26,091	.....	26,091	28,489	.....	28,489
Payment Where American Opportunity Tax Credit Exceeds Liability for Tax	34	.....	34	2,442	.....	2,442	2,585	.....	2,585
Refunding Internal Revenue Collections, Interest	448	.....	448	4,697	.....	4,697	9,919	.....	9,919
Other	1,057	.....	1,057	5,655	2	5,653	58,069	2	58,067
<b>Total--Internal Revenue Service</b>	<b>15,611</b>	<b>.....</b>	<b>15,611</b>	<b>213,718</b>	<b>2</b>	<b>213,716</b>	<b>241,958</b>	<b>2</b>	<b>241,956</b>
Comptroller of the Currency	95	4	91	1,169	641	529	1,053	612	441
Interest on the Public Debt:									
Interest on Treasury Debt Securities (Gross):									
Public Issues (Accrual Basis)	76,704	.....	76,704	820,094	.....	820,094	601,993	.....	601,993
Special Issues (Cash Basis)	15,590	.....	15,590	228,495	.....	228,495	205,844	.....	205,844
<b>Total--Interest on Treasury Debt Securities (Gross)</b>	<b>92,293</b>	<b>.....</b>	<b>92,293</b>	<b>1,048,589</b>	<b>.....</b>	<b>1,048,589</b>	<b>807,836</b>	<b>.....</b>	<b>807,836</b>
<b>Total--Interest on the Public Debt</b>	<b>92,293</b>	<b>.....</b>	<b>92,293</b>	<b>1,048,589</b>	<b>.....</b>	<b>1,048,589</b>	<b>807,836</b>	<b>.....</b>	<b>807,836</b>
Other	16	1	16	162	154	7	144	.....	144
Proprietary Receipts from the Public	.....	499	-499	.....	7,629	-7,629	.....	5,771	-5,771
Intrabudgetary Transactions	-314	.....	-314	-4,611	.....	-4,611	-2,911	.....	-2,911
<b>Total--Department of the Treasury</b>	<b>108,821</b>	<b>1,105</b>	<b>107,716</b>	<b>1,269,689</b>	<b>13,405</b>	<b>1,256,285</b>	<b>1,070,347</b>	<b>12,189</b>	<b>1,058,157</b>
<b>Department of Veterans Affairs:</b>									
Joint DOD-VA Medical Facility Demonstration Fund	68	.....	68	612	.....	612	522	.....	522
Veterans Health Administration:									
Veterans Choice Fund, Veterans Health Administration	(**)	.....	(**)	(**)	.....	(**)	-32	.....	-32
Medical Services	11,734	.....	11,734	91,906	.....	91,906	90,568	.....	90,568
Medical Support and Compliance	1,196	.....	1,196	9,433	.....	9,433	8,026	.....	8,026
Medical Facilities	856	.....	856	8,124	.....	8,124	6,327	.....	6,327
Other	184	33	150	2,277	388	1,889	6,681	351	6,330
Benefits Programs:									
Public Enterprise Funds:									
Housing Accounts	(**)	(**)	(**)	(**)	3	-3	1	4	-4
Other	67	64	3	922	1,426	-504	766	1,384	-618
Compensation and Pensions	28,720	.....	28,720	158,929	.....	158,929	125,325	.....	125,325
Readjustment Benefits	1,219	.....	1,219	12,321	.....	12,321	10,505	.....	10,505
Veterans Housing Benefit Program Fund	18	.....	18	1,701	.....	1,701	946	.....	946
Insurance Funds:									
National Service Life	19	.....	19	256	.....	256	281	.....	281
Veterans Special Life	14	(**)	13	162	29	133	129	34	95
Other	1,024	6	1,018	24,280	54	24,226	4,480	16	4,464
<b>Total--Benefits Programs</b>	<b>31,081</b>	<b>70</b>	<b>31,011</b>	<b>198,571</b>	<b>1,511</b>	<b>197,060</b>	<b>142,432</b>	<b>1,439</b>	<b>140,993</b>
Departmental Administration:									
Construction	92	.....	92	905	.....	905	1,299	.....	1,299
Information Technology Systems	560	.....	560	5,632	.....	5,632	4,947	.....	4,947
General Operating Expenses	(**)	.....	(**)	(**)	.....	(**)	1	.....	1
Other	205	.....	205	2,532	.....	2,532	3,689	.....	3,689
Proprietary Receipts from the Public:									
National Service Life	.....	1	-1	.....	9	-9	.....	25	-25
Other	.....	620	-620	.....	8,822	-8,822	.....	4,506	-4,506
Intrabudgetary Transactions	16	.....	16	-24	.....	-24	9	.....	9
<b>Total--Department of Veterans Affairs</b>	<b>45,991</b>	<b>724</b>	<b>45,267</b>	<b>319,967</b>	<b>10,730</b>	<b>309,237</b>	<b>264,470</b>	<b>6,321</b>	<b>258,149</b>
<b>Corps of Engineers:</b>									
Construction	351	.....	351	3,459	.....	3,459	2,974	.....	2,974
Operation and Maintenance	515	.....	515	3,222	.....	3,222	3,184	.....	3,184
Flood Control and Coastal Emergencies	42	.....	42	545	.....	545	526	.....	526
Harbor Maintenance Trust Fund	.....	.....	.....	1,614	.....	1,614	900	.....	900
Rivers and Harbors Contributed Funds	68	.....	68	588	.....	588	373	.....	373

**Table 5. Outlays of the U.S. Government, August 2024 and Other Periods - Continued**

[\$ millions]

Classification	This Month			Current Fiscal Year to Date			Prior Fiscal Year to Date		
	Gross Outlays	Applicable Receipts	Outlays	Gross Outlays	Applicable Receipts	Outlays	Gross Outlays	Applicable Receipts	Outlays
<b>Corps of Engineers: - Continued</b>									
Other	111	.....	111	1,696	.....	1,696	1,669	.....	1,669
Proprietary Receipts from the Public	.....	29	-29	.....	888	-888	.....	992	-992
Intrabudgetary Transactions	(**)	.....	(**)	(**)	.....	(**)	(**)	.....	(**)
<b>Total--Corps of Engineers</b>	<b>1,087</b>	<b>29</b>	<b>1,058</b>	<b>11,123</b>	<b>888</b>	<b>10,235</b>	<b>9,627</b>	<b>992</b>	<b>8,634</b>
<b>Other Defense Civil Programs:</b>									
Military Retirement:									
Payment to Military Retirement Fund	.....	.....	.....	151,521	.....	151,521	120,438	.....	120,438
Military Retirement Fund	12,577	.....	12,577	71,605	.....	71,605	62,538	.....	62,538
Retiree Health Care:									
Payment to Department of Defense Medicare-Eligible Retiree Health Care Fund	.....	.....	.....	9,584	.....	9,584	9,981	.....	9,981
Department of Defense Medicare-Eligible Retiree Health Care Fund	953	.....	953	11,505	.....	11,505	10,848	.....	10,848
Educational Benefits	7	.....	7	150	.....	150	149	.....	149
Other	26	.....	26	310	.....	310	374	.....	374
Proprietary Receipts from the Public	.....	1	-1	.....	21	-21	.....	24	-24
Intrabudgetary Transactions	-1,696	.....	-1,696	-179,189	.....	-179,189	-147,562	.....	-147,562
<b>Total--Other Defense Civil Programs</b>	<b>11,866</b>	<b>1</b>	<b>11,865</b>	<b>65,486</b>	<b>21</b>	<b>65,465</b>	<b>56,767</b>	<b>24</b>	<b>56,742</b>
<b>Environmental Protection Agency:</b>									
Science and Technology	91	.....	91	732	.....	732	680	.....	680
Environmental Programs and Management	344	.....	344	2,890	.....	2,890	2,603	.....	2,603
State and Tribal Assistance Grants	654	.....	654	6,580	.....	6,580	6,503	.....	6,503
Payment to the Hazardous Substance Superfund	.....	.....	.....	283	.....	283	1,218	.....	1,218
Hazardous Substance Superfund	215	.....	215	1,812	.....	1,812	1,486	.....	1,486
Other	54	2	51	255	66	189	531	64	467
Proprietary Receipts from the Public	.....	9	-9	.....	385	-385	.....	298	-298
Intrabudgetary Transactions	-3	.....	-3	-219	.....	-219	-1,212	.....	-1,212
Offsetting Governmental Receipts	.....	2	-2	.....	31	-31	.....	30	-30
<b>Total--Environmental Protection Agency</b>	<b>1,355</b>	<b>13</b>	<b>1,342</b>	<b>12,334</b>	<b>483</b>	<b>11,851</b>	<b>11,809</b>	<b>391</b>	<b>11,418</b>
<b>Executive Office of the President:</b>									
The White House	9	.....	9	74	.....	74	63	.....	63
Office of Management and Budget	16	.....	16	127	.....	127	109	.....	109
Unanticipated Needs	13	.....	13	68	.....	68	48	.....	48
Other	38	.....	38	305	.....	305	283	.....	283
Proprietary Receipts from the Public	.....	(**)	(**)	.....	(**)	(**)	.....	(**)	(**)
Intrabudgetary Transactions	-2	.....	-2	1	.....	1	-14	.....	-14
<b>Total--Executive Office of the President</b>	<b>74</b>	<b>(**)</b>	<b>74</b>	<b>574</b>	<b>(**)</b>	<b>574</b>	<b>489</b>	<b>(**)</b>	<b>489</b>
<b>General Services Administration:</b>									
Real Property Activities	16	.....	16	-507	.....	-507	-731	.....	-731
Supply and Technology Activities	166	.....	166	343	.....	343	291	.....	291
General Activities	68	.....	68	335	.....	335	276	.....	276
Proprietary Receipts from the Public	.....	15	-15	.....	47	-47	.....	112	-112
Intrabudgetary Transactions	-2	.....	-2	-19	.....	-19	-16	.....	-16
<b>Total--General Services Administration</b>	<b>249</b>	<b>15</b>	<b>234</b>	<b>152</b>	<b>47</b>	<b>106</b>	<b>-180</b>	<b>112</b>	<b>-293</b>
<b>International Assistance Programs:</b>									
Millennium Challenge Corporation	56	.....	56	659	.....	659	637	.....	637
International Security Assistance:									
Foreign Military Financing Program	1,089	.....	1,089	7,889	.....	7,889	6,743	.....	6,743
Economic Support Fund	543	.....	543	9,022	.....	9,022	19,388	.....	19,388
Other	190	.....	190	1,277	22	1,254	1,270	23	1,247
Proprietary Receipts from the Public	.....	85	-85	.....	85	-85	.....	219	-219
<b>Total--International Security Assistance</b>	<b>1,823</b>	<b>85</b>	<b>1,737</b>	<b>18,188</b>	<b>108</b>	<b>18,080</b>	<b>27,401</b>	<b>242</b>	<b>27,159</b>
Multilateral Assistance:									
Contribution to the International Development Association	.....	.....	.....	1,630	.....	1,630	1,430	.....	1,430
Other	73	.....	73	1,138	.....	1,138	1,312	.....	1,312
Proprietary Receipts from the Public	.....	.....	.....	.....	1	-1	.....	.....	.....
<b>Total--Multilateral Assistance</b>	<b>73</b>	<b>.....</b>	<b>73</b>	<b>2,768</b>	<b>1</b>	<b>2,767</b>	<b>2,742</b>	<b>.....</b>	<b>2,742</b>
Agency for International Development:									
Development Assistance Program	327	.....	327	3,139	.....	3,139	2,954	.....	2,954
Assistance for Europe, Eurasia and Central Asia	30	.....	30	798	.....	798	952	.....	952
International Disaster Assistance	348	.....	348	5,868	.....	5,868	8,869	.....	8,869

**Table 5. Outlays of the U.S. Government, August 2024 and Other Periods - Continued**

[\$ millions]

Classification	This Month			Current Fiscal Year to Date			Prior Fiscal Year to Date		
	Gross Outlays	Applicable Receipts	Outlays	Gross Outlays	Applicable Receipts	Outlays	Gross Outlays	Applicable Receipts	Outlays
<b>International Assistance Programs: - Continued</b>									
Operating Expenses	96	.....	96	1,600	.....	1,600	1,570	.....	1,570
Other	291	.....	291	151	(**)	151	624	(**)	624
Proprietary Receipts from the Public	.....	3	-3	.....	397	-397	.....	710	-710
Intrabudgetary Transactions	(**)	.....	(**)	-5	.....	-5	-1	.....	-1
<b>Total--Agency for International Development</b>	<b>1,093</b>	<b>3</b>	<b>1,090</b>	<b>11,553</b>	<b>397</b>	<b>11,156</b>	<b>14,969</b>	<b>710</b>	<b>14,258</b>
Overseas Private Investment Corporation:									
Overseas Private Investment Corporation Accounts	.....	.....	.....	(**)	.....	(**)	5	(**)	5
<b>Total--Overseas Private Investment Corporation</b>	<b>.....</b>	<b>.....</b>	<b>.....</b>	<b>(**)</b>	<b>.....</b>	<b>(**)</b>	<b>5</b>	<b>(**)</b>	<b>5</b>
Peace Corps	36	-2	38	428	(**)	428	395	-1	396
Proprietary Receipts	.....	(**)	(**)	.....	1	-1	.....	(**)	(**)
Military Sales Program:									
Foreign Military Sales Trust Fund	4,100	.....	4,100	43,424	.....	43,424	34,895	.....	34,895
Other	8	8	(**)	112	116	-4	185	157	27
Proprietary Receipts from the Public	.....	5,345	-5,345	.....	46,581	-46,581	.....	46,484	-46,484
Other	72	51	21	1,299	977	321	1,238	848	389
<b>Total--International Assistance Programs</b>	<b>7,261</b>	<b>5,491</b>	<b>1,771</b>	<b>78,431</b>	<b>48,182</b>	<b>30,249</b>	<b>82,468</b>	<b>48,443</b>	<b>34,025</b>
<b>National Aeronautics and Space Administration:</b>									
Science	687	.....	687	7,041	.....	7,041	7,046	.....	7,046
Aeronautics	91	.....	91	866	.....	866	767	.....	767
Exploration	597	.....	597	6,717	.....	6,717	6,500	.....	6,500
Cross Agency Support	353	.....	353	2,861	.....	2,861	2,819	.....	2,819
Space Operations	278	.....	278	3,831	.....	3,831	3,677	.....	3,677
Other	149	.....	149	1,609	.....	1,609	1,672	.....	1,672
Proprietary Receipts from the Public	.....	(**)	(**)	.....	2	-2	.....	3	-3
Intrabudgetary Transactions	(**)	.....	(**)	-1	.....	-1	-3	.....	-3
<b>Total--National Aeronautics and Space Administration</b>	<b>2,155</b>	<b>(**)</b>	<b>2,155</b>	<b>22,924</b>	<b>2</b>	<b>22,921</b>	<b>22,478</b>	<b>3</b>	<b>22,475</b>
<b>National Science Foundation:</b>									
Research and Related Activities	835	.....	835	6,550	.....	6,550	6,370	.....	6,370
Education and Human Resources	152	.....	152	1,201	.....	1,201	1,058	.....	1,058
Other	74	.....	74	656	.....	656	547	.....	547
Proprietary Receipts from the Public	.....	4	-4	.....	31	-31	.....	23	-23
<b>Total--National Science Foundation</b>	<b>1,062</b>	<b>4</b>	<b>1,058</b>	<b>8,407</b>	<b>31</b>	<b>8,376</b>	<b>7,975</b>	<b>23</b>	<b>7,952</b>
<b>Office of Personnel Management:</b>									
Government Payment for Annuity, Employees Health and Life Insurance Benefits									
Life Insurance Benefits	1,284	.....	1,284	13,827	.....	13,827	13,285	.....	13,285
Postal Service Retiree Health Benefits Fund	382	.....	382	4,160	.....	4,160	3,985	.....	3,985
Civil Service Retirement and Disability Fund	8,899	.....	8,899	98,864	.....	98,864	95,437	.....	95,437
Employees Life Insurance Fund	357	1,372	-1,015	3,598	5,945	-2,347	3,532	4,918	-1,385
Employees and Retired Employees Health Benefits Fund	6,760	6,611	149	64,306	62,498	1,808	60,195	57,842	2,353
Other	-7	.....	-7	213	.....	213	114	.....	114
Proprietary Receipts from the Public	.....	(**)	(**)	.....	1	-1	.....	3	-3
Intrabudgetary Transactions:									
Postal Service Contributions	-2	.....	-2	-687	.....	-687	-792	.....	-792
Civil Service Retirement and Disability Fund:									
Other	-4	.....	-4	-42	.....	-42	-39	.....	-39
<b>Total--Office of Personnel Management</b>	<b>17,670</b>	<b>7,983</b>	<b>9,686</b>	<b>184,239</b>	<b>68,444</b>	<b>115,795</b>	<b>175,718</b>	<b>62,763</b>	<b>112,955</b>
<b>Small Business Administration:</b>									
Salaries and Expenses	128	.....	128	868	(**)	868	101	.....	101
Business Loans Program	(**)	(**)	(**)	544	2	543	348	1	346
Disaster Loans Program	49	(**)	49	34,100	(**)	34,100	29,899	(**)	29,899
Other	41	2	39	407	26	381	499	23	476
Proprietary Receipts from the Public	.....	-12	12	.....	2,890	-2,890	.....	4,952	-4,952
Intrabudgetary Transactions	-6	.....	-6	-9	.....	-9	-4	.....	-4
<b>Total--Small Business Administration</b>	<b>212</b>	<b>-10</b>	<b>222</b>	<b>35,910</b>	<b>2,918</b>	<b>32,992</b>	<b>30,844</b>	<b>4,977</b>	<b>25,867</b>
<b>Social Security Administration:</b>									
Payments to Social Security Trust Funds	27	.....	27	53,739	.....	53,739	50,774	.....	50,774
Supplemental Security Income Program	10,635	.....	10,635	61,208	.....	61,208	54,067	.....	54,067
Federal Old-Age and Survivors Insurance Trust Fund (Off-Budget):									
Benefit Payments	110,323	.....	110,323	1,183,347	.....	1,183,347	1,089,378	.....	1,089,378
Administrative Expenses	422	.....	422	4,107	.....	4,107	4,002	.....	4,002
Payment to Railroad Retirement Account	.....	.....	.....	5,860	.....	5,860	5,576	.....	5,576
<b>Total--Federal Old-Age and Survivors Insurance Trust Fund (Off-Budget)</b>	<b>110,746</b>	<b>.....</b>	<b>110,746</b>	<b>1,193,313</b>	<b>.....</b>	<b>1,193,313</b>	<b>1,098,957</b>	<b>.....</b>	<b>1,098,957</b>

**Table 5. Outlays of the U.S. Government, August 2024 and Other Periods - Continued**

[\$ millions]

Classification	This Month			Current Fiscal Year to Date			Prior Fiscal Year to Date		
	Gross Outlays	Applicable Receipts	Outlays	Gross Outlays	Applicable Receipts	Outlays	Gross Outlays	Applicable Receipts	Outlays
<b>Social Security Administration: - Continued</b>									
Federal Disability Insurance Trust Fund (Off-Budget):									
Benefit Payments	13,057	.....	13,057	140,814	.....	140,814	137,009	.....	137,009
Administrative Expenses	292	.....	292	2,481	.....	2,481	2,499	.....	2,499
Payment to Railroad Retirement Account	.....	.....	.....	74	.....	74	60	.....	60
Total--Federal Disability Insurance Trust Fund (Off-Budget)	13,349	.....	13,349	143,369	.....	143,369	139,568	.....	139,568
Other	30	.....	30	173	.....	173	150	.....	150
Proprietary Receipts from the Public:									
On-Budget	.....	272	-272	.....	2,839	-2,839	.....	2,389	-2,389
Off-Budget	.....	2	-2	.....	-43	43	.....	22	-22
Intrabudgetary Transactions:									
Off-Budget <sup>1</sup>	-27	.....	-27	-53,736	.....	-53,736	-50,955	.....	-50,955
<b>Total--Social Security Administration</b>	<b>134,759</b>	<b>274</b>	<b>134,485</b>	<b>1,398,065</b>	<b>2,797</b>	<b>1,395,268</b>	<b>1,292,562</b>	<b>2,411</b>	<b>1,290,151</b>
Independent Agencies									
United States Agency for Global Media	96	(**)	96	812	(**)	811	778	(**)	778
Bureau of Consumer Financial Protection	98	.....	98	1,126	(**)	1,126	695	(**)	695
Corporation for National and Community Service	115	(**)	115	1,152	7	1,144	903	1	902
Corporation for Public Broadcasting	.....	.....	.....	585	.....	585	535	.....	535
District of Columbia:									
Courts	37	(**)	37	334	(**)	334	290	(**)	290
General and Special Payments	27	(**)	27	637	99	538	656	90	566
Equal Employment Opportunity Commission	47	1	46	434	7	427	396	4	392
Export-Import Bank of the United States	-22	.....	-22	88	623	-535	254	429	-175
Federal Communications Commission:									
Universal Service Fund	791	.....	791	7,979	.....	7,979	7,527	.....	7,527
Other	249	2	247	9,242	22	9,220	9,046	19	9,027
Federal Deposit Insurance Corporation:									
Deposit Insurance Fund	-59	.....	-59	42,561	.....	42,561	45,073	.....	45,073
FSLIC Resolution Fund	(**)	4	-4	(**)	48	-48	(**)	39	-39
Total--Federal Deposit Insurance Corporation	-59	4	-63	42,561	48	42,513	45,073	39	45,034
Federal Drug Control Programs	30	.....	30	377	.....	377	389	.....	389
Federal Housing Finance Agency	34	.....	34	335	.....	335	323	.....	323
Institute of Museum and Library Services	35	(**)	35	264	(**)	264	311	(**)	311
Intelligence Community Management Account	77	.....	77	524	.....	524	517	.....	517
Legal Services Corporation	.....	.....	.....	560	.....	560	580	.....	580
National Archives and Records Administration	59	1	58	467	15	452	400	15	384
National Credit Union Administration	34	116	-82	707	1,582	-875	1,293	1,774	-481
National Endowment for the Arts	18	(**)	18	201	(**)	201	210	1	209
National Endowment for the Humanities	18	(**)	18	183	(**)	182	224	(**)	224
National Labor Relations Board	36	(**)	36	276	(**)	276	252	(**)	252
Nuclear Regulatory Commission	106	94	12	878	692	186	800	648	152
Postal Service:									
Off-Budget:									
Public Enterprise Funds	7,878	6,602	1,275	93,837	91,490	2,348	101,549	98,130	3,419
Other	3	.....	3	271	.....	271	271	.....	271
Other	.....	.....	.....	81	.....	81	50	.....	50
Railroad Retirement Board:									
Federal Windfall Subsidy	(**)	.....	(**)	6	.....	6	7	.....	7
Federal Payments to the Railroad Retirement Accounts	1	.....	1	962	.....	962	885	.....	885
Railroad Unemployment Insurance Trust Fund:									
Benefit Payments	5	.....	5	52	.....	52	55	.....	55
Transfer To Administrative Funds	2	.....	2	21	.....	21	18	.....	18
Other	(**)	.....	(**)	(**)	.....	(**)	(**)	.....	(**)
Rail Industry Pension Fund:									
Benefit Payments	484	.....	484	5,295	.....	5,295	5,241	.....	5,241
OASDI Certifications	(**)	.....	(**)	-2	.....	-2	-3	.....	-3
Transfer to Administrative Funds	8	.....	8	88	.....	88	92	.....	92
Other	(**)	.....	(**)	1	.....	1	(**)	.....	(**)
National Railroad Retirement Investment Trust:									
Administrative Expenses	3	.....	3	54	.....	54	52	.....	52
Transfers to the Railroad Retirement Trust Funds from the National Railroad Retirement Investment Trust	19	.....	19	1,020	.....	1,020	1,229	.....	1,229

**Table 5. Outlays of the U.S. Government, August 2024 and Other Periods - Continued**

[\$ millions]

Classification	This Month			Current Fiscal Year to Date			Prior Fiscal Year to Date		
	Gross Outlays	Applicable Receipts	Outlays	Gross Outlays	Applicable Receipts	Outlays	Gross Outlays	Applicable Receipts	Outlays
Independent Agencies - Continued	.....	.....	.....	.....	.....	.....	.....	.....	.....
Railroad Social Security Equivalent Benefit Account:									
Benefit Payments	713	.....	713	7,970	.....	7,970	7,683	.....	7,683
Transfer To Administrative Funds	2	.....	2	20	.....	20	20	.....	20
Other	5	.....	5	18	.....	18	-13	.....	-13
Proprietary Receipts from the Public	.....	433	-433	.....	3,012	-3,012	.....	2,337	-2,337
Intrabudgetary Transactions:									
Payments from Other Funds to the Railroad Retirement Trust Funds	.....	.....	.....	-5,933	.....	-5,933	-5,636	.....	-5,636
Other	-19	.....	-19	-1,984	.....	-1,984	-2,117	.....	-2,117
<b>Total--Railroad Retirement Board</b>	<b>1,223</b>	<b>433</b>	<b>789</b>	<b>7,587</b>	<b>3,012</b>	<b>4,576</b>	<b>7,513</b>	<b>2,337</b>	<b>5,177</b>
Securities and Exchange Commission	285	(**)	285	2,258	-1	2,259	1,104	(**)	1,104
Smithsonian Institution	110	(**)	110	1,252	(**)	1,251	1,265	(**)	1,264
Tennessee Valley Authority	4,917	5,051	-134	42,708	42,124	584	35,339	35,064	275
Other	513	28	485	3,964	1,060	2,904	3,808	1,058	2,751
<b>Total--Independent Agencies</b>	<b>16,752</b>	<b>12,333</b>	<b>4,419</b>	<b>221,680</b>	<b>140,781</b>	<b>80,899</b>	<b>222,352</b>	<b>139,609</b>	<b>82,743</b>
<b>Undistributed Offsetting Receipts:</b>									
Other Interest	-1	.....	-1	-9	1	-10	-7	1	-7
Employer Share, Employee Retirement:									
Department of Health and Human Services:									
Federal Hospital Insurance Trust Fund:									
Federal Employer Contributions	-432	.....	-432	-4,442	.....	-4,442	-4,200	.....	-4,200
Postal Service Employer Contributions	-75	.....	-75	-743	.....	-743	-661	.....	-661
Department of State:									
Foreign Service Retirement and Disability Fund	-34	.....	-34	-408	.....	-408	-382	.....	-382
Other Defense Civil Programs:									
Military Retirement Fund	-2,034	.....	-2,034	-42,455	.....	-42,455	-36,412	.....	-36,412
Department of Defense Medicare-Eligible Retiree Health Care Fund	.....	.....	.....	-10,837	.....	-10,837	-10,033	.....	-10,033
Office of Personnel Management:									
Civil Service Retirement and Disability Fund	-5,249	.....	-5,249	-48,651	.....	-48,651	-43,940	.....	-43,940
Social Security Administration:									
Federal Old-Age and Survivors Insurance Trust Fund:									
Federal Employer Contributions	-1,797	.....	-1,797	-18,120	.....	-18,120	-16,899	.....	-16,899
Federal Disability Insurance Trust Fund:									
Federal Employer Contributions	-305	.....	-305	-3,077	.....	-3,077	-2,868	.....	-2,868
Other	-3	.....	-3	-5	.....	-5	-3	.....	-3
<b>Total--Employer Share, Employee Retirement</b>	<b>-9,929</b>	<b>.....</b>	<b>-9,929</b>	<b>-128,738</b>	<b>.....</b>	<b>-128,738</b>	<b>-115,397</b>	<b>.....</b>	<b>-115,397</b>
Interest Received by Trust Funds:									
Judicial Branch:									
Judicial Survivors Annuity Fund	-6	.....	-6	-30	.....	-30	-30	.....	-30
Department of Health and Human Services:									
Federal Hospital Insurance Trust Fund	-61	.....	-61	-6,057	.....	-6,057	-5,242	.....	-5,242
Federal Supplementary Medical Insurance Trust Fund	-97	.....	-97	-3,996	.....	-3,996	-4,300	.....	-4,300
Department of Homeland Security:									
Oil Spill Liability Trust Fund	-32	.....	-32	-335	.....	-335	-222	.....	-222
Other	-19	.....	-19	-85	.....	-85	-23	.....	-23
Department of Labor:									
Unemployment Trust Fund	-11	.....	-11	-2,231	.....	-2,231	-1,341	.....	-1,341
Department of State:									
Foreign Service Retirement and Disability Fund	(**)	.....	(**)	-602	.....	-602	-513	.....	-513
Department of Transportation:									
Airport and Airway Trust Fund	-9	.....	-9	-486	.....	-486	-248	.....	-248
Highway Trust Fund	-467	.....	-467	-5,627	.....	-5,627	-5,191	.....	-5,191
Department of Veterans Affairs:									
National Service Life Insurance Fund	(**)	.....	(**)	-20	.....	-20	-27	.....	-27
United States Government Life Insurance Fund	(**)	.....	(**)	(**)	.....	(**)	(**)	.....	(**)
Corps of Engineers	-33	.....	-33	-529	.....	-529	-324	.....	-324
Other Defense Civil Programs:									
Military Retirement Fund	-8,252	.....	-8,252	-64,713	.....	-64,713	-57,144	.....	-57,144
Educational Benefits Fund	-3	.....	-3	-21	.....	-21	-25	.....	-25
Armed Forces Retirement Home	-1	.....	-1	-9	.....	-9	-6	.....	-6
Environmental Protection Agency	-13	.....	-13	-213	.....	-213	-330	.....	-330
Office of Personnel Management:									
Civil Service Retirement and Disability Fund	-12	.....	-12	-26,573	.....	-26,573	-23,863	.....	-23,863
Social Security Administration:									
Federal Old-Age and Survivors Insurance Trust Fund	-412	.....	-412	-62,583	.....	-62,583	-62,443	.....	-62,443

**Table 5. Outlays of the U.S. Government, August 2024 and Other Periods - Continued**

[\$ millions]

Classification	This Month			Current Fiscal Year to Date			Prior Fiscal Year to Date		
	Gross Outlays	Applicable Receipts	Outlays	Gross Outlays	Applicable Receipts	Outlays	Gross Outlays	Applicable Receipts	Outlays
<b>Undistributed Offsetting Receipts: - Continued</b>									
Federal Disability Insurance Trust Fund	-26	.....	-26	-4,511	.....	-4,511	-3,211	.....	-3,211
Independent Agencies:									
Railroad Retirement Board	-7	.....	-7	-33	.....	-33	-30	.....	-30
Other	-13	.....	-13	-79	.....	-79	-32	.....	-32
Other	-54	.....	-54	-408	.....	-408	-321	.....	-321
Total--Interest Received by Trust Funds	-9,527	.....	-9,527	-179,141	.....	-179,141	-164,867	.....	-164,867
Rents and Royalties on the Outer Continental Shelf Lands	.....	307	-307	.....	6,410	-6,410	.....	6,712	-6,712
<b>Total--Undistributed Offsetting Receipts</b>	<b>-19,457</b>	<b>307</b>	<b>-19,765</b>	<b>-307,888</b>	<b>6,411</b>	<b>-314,299</b>	<b>-280,271</b>	<b>6,713</b>	<b>-286,983</b>
<b>Total Outlays</b>	<b>737,485</b>	<b>50,864</b>	<b>686,620</b>	<b>6,821,489</b>	<b>533,294</b>	<b>6,288,195</b>	<b>6,357,553</b>	<b>861,218</b>	<b>5,496,336</b>
<b>Total On-Budget</b>	<b>608,077</b>	<b>44,260</b>	<b>563,817</b>	<b>5,532,726</b>	<b>441,847</b>	<b>5,090,879</b>	<b>5,153,585</b>	<b>763,066</b>	<b>4,390,519</b>
<b>Total Off-Budget</b>	<b>129,408</b>	<b>6,605</b>	<b>122,803</b>	<b>1,288,763</b>	<b>91,447</b>	<b>1,197,316</b>	<b>1,203,969</b>	<b>98,152</b>	<b>1,105,817</b>
<b>Total Surplus (+) or Deficit (-)</b>			<b>-380,080</b>			<b>-1,897,079</b>			<b>-1,524,525</b>
<b>Total On-Budget</b>			<b>-354,118</b>			<b>-1,853,448</b>			<b>-1,515,535</b>
<b>Total Off-Budget</b>			<b>-25,963</b>			<b>-43,631</b>			<b>-8,990</b>

**MEMORANDUM**

Receipts Offset Against Outlays (In Millions)

	Current Fiscal Year to Date	Comparable Period Prior Fiscal Year
Proprietary Receipts	276,740	611,792
Intrabudgetary Transactions	1,035,969	936,846
Governmental Receipts	14,706	13,647
<b>Total Receipts Offset Against Outlays</b>	<b>1,327,414</b>	<b>1,562,286</b>

1 Includes FICA and SECA tax credits, non-contributory military service credits, special benefits for the aged and credit for the unnegotiated OASI benefit checks.

Note: Details may not add to totals due to rounding.

... No Transactions

(\*\*) Less than absolute value of \$500,000



**Table 6. Means of Financing the Deficit or Disposition of Surplus by the U.S. Government, August 2024 and Other Periods**  
[\$ millions]

Assets and Liabilities Directly Related to Budget Off-Budget Activity	Net Transactions (-) denotes net reduction of either liability or asset accounts			Account Balances Current Fiscal Year		
	This Month	Fiscal Year to Date		Beginning of		Close of This Month
		This Year	Prior Year	This Year	This Month	
<b>Liability Accounts:</b>						
Borrowing from the Public:						
Treasury Securities, Issued Under General Financing Authorities:						
Debt Held by the Public	237,494	1,837,863	1,744,858	26,330,142	27,930,511	28,168,004
Intragovernmental Holdings	-86,207	250,860	240,380	6,837,192	7,174,259	7,088,052
Total Treasury Securities Outstanding	151,286	2,088,723	1,985,238	33,167,334	35,104,771	35,256,057
Plus Premium on Treasury Securities	-592	3,339	84	65,691	69,622	69,030
Less Discount on Treasury Securities	1,026	65,858	87,304	264,594	329,425	330,452
Total Treasury Securities Net of Premium and Discount	149,668	2,026,204	1,898,018	32,968,431	34,844,966	34,994,634
Agency Securities, Issued Under Special Financing Authorities (See Schedule B; for Other Agency Borrowing, See Schedule C)						
Total Federal Securities	-141	603	301	19,568	20,311	20,170
	149,528	2,026,807	1,898,319	32,987,998	34,865,277	35,014,805
Deduct:						
Federal Securities Held as Investments of Government Accounts (See Schedule D)						
Less Discount on Federal Securities Held as Investments of Government Accounts	-85,718	249,300	241,542	6,817,835	7,152,853	7,067,135
Net Federal Securities Held as Investments of Government Accounts	1,062	38,595	41,961	69,341	106,874	107,936
	-86,779	210,705	199,582	6,748,494	7,045,979	6,959,199
Total Borrowing from the Public	236,307	1,816,102	1,698,737	26,239,504	27,819,298	28,055,606
Accrued Interest Payable to the Public	-16,235	9,389	505	116,746	142,370	126,135
Allocations of Special Drawing Rights	2,089	3,633	5,750	151,041	152,585	154,674
Uninvested Balances, Deposit Funds	2,928	52	-90	30,566	27,690	30,619
Miscellaneous Liability Accounts (Includes Checks Outstanding Etc.)	-2,266	10,712	28	29,359	42,338	40,071
<b>Total Liability Accounts</b>	<b>222,823</b>	<b>1,839,888</b>	<b>1,704,931</b>	<b>26,567,216</b>	<b>28,184,281</b>	<b>28,407,104</b>
<b>Asset Accounts (Deduct)</b>						
Cash and Monetary Assets:						
U.S. Treasury Operating Cash:						
Federal Reserve Account <sup>1</sup>	-144,488	52,623	-94,151	656,889	854,001	709,513
Balance	-144,488	52,623	-94,151	656,889	854,001	709,513
Special Drawing Rights:						
Total Holdings	3,256	9,593	10,726	162,058	168,395	171,651
SDR Certificates Issued to Federal Reserve Banks	.....	-5,000	.....	-5,200	-10,200	-10,200
Balance	3,256	4,593	10,726	156,858	158,195	161,451
Reserve Position on the U.S. Quota in the IMF:						
U.S. Subscription to International Monetary Fund:						
Direct Quota Payments	.....	.....	.....	111,629	111,629	111,629
Maintenance of Value Adjustments	1,509	2,625	4,155	-2,494	-1,378	131
Letter of Credit Issued to IMF	953	-2,286	-407	-78,365	-81,604	-80,651
Dollar Deposits with the IMF	2	91	-33	-370	-281	-279
Receivable/Payable (-) for Interim Maintenance of Value Adjustments	-4,504	-5,158	-2,929	1,570	915	-3,588
Balance	-2,040	-4,727	785	31,970	29,282	27,243
Loans to International Monetary Fund	.....	-79	-451	79	(**)	(**)
Other Cash and Monetary Assets	-170	-626	1,120	26,995	26,539	26,369
Total Cash and Monetary Assets	-143,442	51,784	-81,971	872,792	1,068,017	924,575
Non-Federal Securities of the National Railroad Retirement Investment Trust						
Net Activity, Guaranteed Loan Financing (See Schedule E)	387	1,427	1,149	24,469	25,509	25,896
Net Activity, Direct Loan Financing (See Schedule E)	355	23,293	34,580	82,652	105,590	105,945
Miscellaneous Asset Accounts	-14,722	-132,061	227,072	1,598,363	1,481,024	1,466,302
	-169	-99	-98	104	174	5
<b>Total Asset Accounts</b>	<b>-157,590</b>	<b>-55,656</b>	<b>180,733</b>	<b>2,578,380</b>	<b>2,680,314</b>	<b>2,522,724</b>
<b>Excess of Liabilities (+) or Assets (-)</b>	<b>380,414</b>	<b>1,895,544</b>	<b>1,524,198</b>	<b>23,988,837</b>	<b>25,503,967</b>	<b>25,884,380</b>
Transactions Not Applied to Current Year's Surplus or Deficit (See Schedule A for Details)	-333	1,535	327	.....	1,868	1,535
<b>Total Budget and Off-Budget Federal Entities (Financing of Deficit (+) or Disposition of Surplus (-))</b>	<b>380,080</b>	<b>1,897,079</b>	<b>1,524,525</b>	<b>23,988,837</b>	<b>25,505,835</b>	<b>25,885,916</b>

1 Major sources of information used to determine Treasury's operating cash balance include Federal Reserve Banks, Treasury Regional Finance Centers, Internal Revenue Service Centers, various electronic systems, and information on the Public Debt. Information is presented on a modified cash basis. Deposits are

reflected as received and withdrawals are reflected as processed.

Note: Details may not add to totals due to rounding.

... No Transactions

(\*\*) Less than absolute value of \$500,000

**Table 6. Schedule A-Analysis of Change in Excess of Liabilities of the U.S. Government, August 2024 and Other Periods**

[\$ millions]

Classification	This Month	Fiscal Year to Date	
		This Year	Prior Year
<b>Excess of Liabilities Beginning of Period:</b>			
Based on Composition of Unified Budget in Preceding Period	25,503,967	23,988,837	21,746,382
Adjustments During Current Fiscal Year for Changes in Composition of Unified Budget:			
Revisions by Federal Agencies to the Prior Budget Results	.....	.....	547,178
Excess of Liabilities Beginning of Period (Current Basis)	25,503,967	23,988,837	22,293,560
<b>Budget Surplus (-) or Deficit:</b>			
Based on Composition of Unified Budget in Prior Fiscal Year	380,080	1,897,079	1,524,525
Total Surplus (-) or Deficit (Table 2)	380,080	1,897,079	1,524,525
Total-On-Budget (Table 2)	354,118	1,853,448	1,515,535
Total-Off-Budget (Table 2)	25,963	43,631	8,990
<b>Transactions Not Applied to Current Year's Surplus or Deficit:</b>			
Premium/Discount on Buyback of U.S. Treasury Securities	-965	-2,537	-2
Reclassification of Aged Unreconciled Accounts	.....	.....	958
Other	1,298	1,001	-1,282
Total-Transactions Not Applied to Current Year's Surplus or Deficit	333	-1,535	-327
<b>Excess of Liabilities Close of Period</b>	<b>25,884,380</b>	<b>25,884,380</b>	<b>23,817,758</b>

Note: Details may not add to totals due to rounding.

... No Transactions

**Table 6. Schedule B-Securities Issued by Federal Agencies Under Special Financing Authorities, August 2024 and Other Periods**

[\$ millions]

Classification	Net Transactions (-) denotes net reduction of liability accounts			Account Balances Current Fiscal Year		
	This Month	Fiscal Year to Date		Beginning of		Close of This Month
		This Year	Prior Year	This Year	This Month	
<b>Agency Securities, Issued Under Special Financing Authorities:</b>						
Obligations Guaranteed by the United States, Issued By:						
Department of Housing and Urban Development:						
Federal Housing Administration	.....	.....	.....	19	19	19
Obligations Not Guaranteed by the United States, Issued By:						
Legislative Branch:						
Architect of the Capitol	-9	-16	-15	16	9	(**)
Independent Agencies:						
Federal Communications Commission	.....	.....	.....	(**)	(**)	(**)
National Archives and Records Administration	.....	.....	.....	(**)	(**)	(**)
Tennessee Valley Authority	-132	619	316	19,533	20,284	20,152
<b>Total Agency Securities</b>	<b>-141</b>	<b>603</b>	<b>301</b>	<b>19,568</b>	<b>20,311</b>	<b>20,170</b>

Note: Details may not add to totals due to rounding.

(\*\*) Less than absolute value of \$500,000

... No Transactions

**Table 6. Schedule C (Memorandum)-Federal Agency Borrowing Financed Through the Issue of Treasury Securities, August 2024 and Other Periods**

[\$ millions]						
Classification	Transactions			Account Balances Current Fiscal Year		
	This Month	Fiscal Year to Date		Beginning of		Close of This Month
		This Year	Prior Year	This Year	This Month	
<b>Borrowing from the US Treasury:</b>						
Department of Agriculture:						
Farm Service Agency:						
Commodity Credit Corporation	-504	-5,608	680	17,558	12,453	11,950
Agricultural Credit Insurance Fund	825	765	973	18,371	18,310	19,135
Farm Storage Facility Loans	53	68	71	1,789	1,805	1,858
Emergency Boll Weevil Loan Fund	.....	.....	(**)	.....	.....	.....
Rural Housing Service:						
Rural Housing Insurance	604	1,253	360	20,046	20,696	21,300
Rural Community Facility Loans Fund	185	478	2	12,355	12,648	12,833
Rural Business - Cooperative Service:						
Rural Business and Industry Loans	97	84	-27	50	38	134
Rural Development Loan Fund	8	-4	-10	263	251	259
Rural Economic Development Loan Fund	10	-9	40	257	238	247
Renewable Energy Guaranteed Loan Account	3	20	2	8	26	28
Rural Microenterprise Investment Loans	1	2	-1	40	41	42
Biorefinery Assistance Loan Account	.....	44	186	186	230	230
Rural Utilities Service:						
Rural Water and Waste Disposal Fund	331	571	-149	14,625	14,865	15,196
Rural Electrification and Telecommunications Fund	30	1,925	936	7,926	9,821	9,851
Rural Telephone Bank	.....	(**)	-3	57	56	56
Distance Learning and Telemedicine Program	46	43	-18	559	555	601
Foreign Agricultural Service	-27	-27	-40	226	226	199
Department of Commerce:						
National Oceanic and Atmospheric Administration:						
Fisheries Finance	.....	104	13	356	460	460
Department of Defense--Military Programs:						
Family Housing Improvement Loans	148	148	78	1,639	1,639	1,787
Defense Agencies	.....	.....	271	271	271	271
Department of Education:						
College Housing and Academic Facilities Loans	.....	(**)	.....	2	2	2
Historically Black College and University Capital Financing Fund	.....	.....	17	82	82	82
Federal Direct Student Loans	-25,239	33,074	287,012	1,137,355	1,195,667	1,170,428
Teach Grant Loans	-2	18	40	581	601	599
Temporary Student Loan Purchase Authority	-13	-3,437	3,047	23,668	20,243	20,231
Federal Family Education Loans	.....	1,216	4,471	26,902	28,118	28,118
Department of Energy:						
Bonneville Power Administration Fund	-177	-35	332	5,784	5,926	5,749
Western Area Power Administration - Recovery Act	.....	.....	.....	76	76	76
Advanced Technology Vehicles Manufacturing Loans	.....	42	.....	.....	42	42
Title 17 Innovative Technology Loans	(**)	169	72	653	821	822
Department of Health and Human Services:						
Consumer Operated and Oriented Plan	.....	.....	.....	320	320	320
Consumer Operated and Oriented Plan Program Contingency Fund	.....	.....	.....	98	98	98
Department of Homeland Security:						
National Flood Insurance Fund	.....	.....	.....	20,525	20,525	20,525
Disaster Assistance Loan Fund	1	5	2	4	7	8
Department of Housing and Urban Development:						
Public and Indian Housing Programs:						
Low-Rent Public Housing - Loans and Other Expenses	.....	5	27	28	32	32
Native Hawaiian Housing Loans	.....	1	2	4	6	6
Housing Programs:						
Emergency Homeowners' Relief Fund	-2	-2	1	3	3	1
Federal Housing Administration	120	17,651	16,001	106,967	124,498	124,618
Home Ownership Preservation Equity Fund	.....	.....	3	10	10	10
Green Retrofit Program for Multifamily Housing-Recovery Act	14	174	8	92	252	266
Department of the Interior:						
Bureau of Indian Affairs and Bureau of Indian Education	(**)	(**)	(**)	(**)	(**)	(**)
Bureau of Reclamation Loan Fund	.....	.....	.....	24	24	24
Assistance to American Samoa Loan Fund	.....	(**)	(**)	6	6	6

**Table 6. Schedule C (Memorandum)-Federal Agency Borrowing Financed Through the Issue of Treasury Securities, August 2024 and Other Periods - Continued**

Classification	[\$ millions]					
	Transactions			Account Balances Current Fiscal Year		
	This Month	Fiscal Year to Date		Beginning of		Close of This Month
This Year		Prior Year	This Year	This Month		
<b>Borrowing from the US Treasury: - Continued</b>						
Department of Labor:						
Black Lung Disability Trust Fund	.....	.....	.....	4,793	4,793	4,793
Department of State:						
Repatriation Loans	.....	2	2	5	8	8
Department of Transportation:						
Federal Highway Administration:						
Transportation Infrastructure Finance and Innovation Fund	61	1,169	5,558	20,258	21,366	21,427
Federal Railroad Administration:						
Railroad Rehabilitation and Improvement Loan Fund	174	681	772	1,865	2,371	2,546
Other	.....	.....	.....	(**)	(**)	(**)
Maritime Administration:						
Maritime Guaranteed Loan (Title XI) Fund	-88	-85	.....	89	93	5
Maritime Guaranteed Loan (Title XI) FFB Financing Account	.....	.....	8	8	8	8
Department of the Treasury:						
Departmental Offices:						
Community Development Financial Institutions Fund	-2	2	-2	108	112	110
Temporary Credit and Liquidity Program	-92	-65	-105	992	1,019	927
Troubled Asset Relief Program	.....	.....	-3	.....	.....	.....
Small Business Lending Financing Fund	-2	-2	-1	33	33	31
ESF - Economic Stabilization Program	.....	-6,793	-2,572	14,936	8,143	8,143
Federal Financing Bank Revolving Fund	307	46,969	5,163	130,324	176,986	177,293
Department of Veterans Affairs:						
Veterans Housing Benefit Program Fund	.....	5,075	85	471	5,546	5,546
Native American Veteran Housing Fund	7	5	4	92	91	98
Vocational Rehabilitation Loan Fund	.....	1	(**)	(**)	1	1
Environmental Protection Agency:						
Water Infrastructure Finance and Innovation Loan Program	203	4,283	1,198	2,953	7,033	7,236
International Assistance Programs:						
International Security Assistance:						
Foreign Military Loan Program	-504	1,441	-479	504	2,449	1,945
Military Debt Reduction	.....	.....	.....	40	40	40
Agency for International Development:						
Development Credit Authority Loan Fund	108	191	83	83	166	274
United States International Development Finance Corporation	-996	1,379	3,002	10,498	12,872	11,877
Small Business Administration:						
Business Loan Fund	-210	381	232	2,374	2,965	2,756
Disaster Loan Fund	-69,373	-70,090	6,099	331,946	331,229	261,855
Independent Agencies:						
Export-Import Bank of the United States	-1,822	-1,651	.....	12,804	12,975	11,153
Presidio Trust	.....	.....	.....	185	185	185
Railroad Retirement Board:						
Social Security Equivalent Benefit Account	374	-490	-251	4,627	3,763	4,137
Smithsonian Institution:						
John F. Kennedy Center Parking Facilities	.....	-20	.....	20	.....	.....
Other:						
Borrowing from the US Treasury - Other	.....	(**)	1	1	1	1
<b>Total Borrowing from the US Treasury</b>	<b>-95,343</b>	<b>31,120</b>	<b>333,192</b>	<b>1,959,775</b>	<b>2,086,238</b>	<b>1,990,895</b>
<b>Borrowing from the Federal Financing Bank:</b>						
Department of Agriculture:						
Rural Utilities Service:						
Rural Electrification and Telecommunications Fund	291	84	1,920	54,548	54,342	54,633
Department of Education:						
Historically Black College and University Capital Financing Fund	19	150	86	369	500	519
Department of Energy:						
Advanced Technology Vehicles Manufacturing Loans	.....	905	1,066	1,066	1,971	1,971
Title 17 Innovative Technology Loans	-58	-402	120	15,373	15,028	14,970
Department of Health and Human Services:						
Health Maintenance Organization Loan and Loan Guarantee Fund	.....	.....	.....	(**)	(**)	(**)
Department of Housing and Urban Development:						
Housing Programs:						

**Table 6. Schedule C (Memorandum)-Federal Agency Borrowing Financed Through the Issue of Treasury Securities, August 2024 and Other Periods - Continued**

[\$ millions]

Classification	Transactions			Account Balances Current Fiscal Year		
	This Month	Fiscal Year to Date		Beginning of		Close of This Month
		This Year	Prior Year	This Year	This Month	
<b>Borrowing from the Federal Financing Bank: - Continued</b>						
Federal Housing Administration	20	14	87	2,800	2,793	2,814
Department of Transportation:						
Maritime Administration:						
Maritime Guaranteed Loan (Title XI) FFB Financing Account	.....	-12	-12	333	321	321
Department of the Treasury:						
Departmental Offices:						
Community Development Financial Institutions Fund	35	90	91	1,242	1,297	1,332
Department of Veterans Affairs:						
Guaranteed Transitional Housing Loans for Homeless Veterans	.....	(**)	(**)	4	4	4
Independent Agencies:						
Federal Deposit Insurance Corporation						
FDIC (acting in its capacity as Receiver)	.....	43,333	.....	50,000	93,333	93,333
Postal Service	.....	1,760	2,142	13,000	14,760	14,760
<b>Total Borrowing from the Federal Financing Bank</b>	<b>307</b>	<b>45,922</b>	<b>5,500</b>	<b>138,735</b>	<b>184,350</b>	<b>184,657</b>

Note: Details may not add to totals due to rounding.

Note: This table includes lending by the Federal Financing Bank accomplished by the purchase of agency financial assets, by the acquisition of agency debt securities, and by direct loans on behalf of an agency. The Federal Financing Bank borrows from Treasury and issues its own securities and in turn may loan

these funds to agencies in lieu of agencies borrowing directly through Treasury or issuing their own securities.

... No Transactions

(\*\*) Less than absolute value of \$500,000

**Table 6. Schedule D-Investments of Federal Government Accounts in Federal Securities, August 2024 and Other Periods**  
 [\$ millions]

Classification	Net Purchases or Sales (-)			Securities Held as Investments Current Fiscal Year		
	This Month	Fiscal Year to Date		Beginning of		Close of This Month
		This Year	Prior Year	This Year	This Month	
<b>Federal Funds:</b>						
Department of Agriculture	-6	112	11	273	391	385
Department of Commerce	.....	2	2	.....	2	2
<b>Department of Defense--Military Programs:</b>						
Defense Cooperation Account	.....	.....	(**)	9	9	9
Department of Energy	1,074	4,982	4,022	63,168	67,075	68,149
Department of Health and Human Services	.....	19,031	16,396	.....	19,031	19,031
Department of Homeland Security	.....	876	918	3,391	4,267	4,267
<b>Department of Housing and Urban Development:</b>						
<b>Housing Programs:</b>						
Federal Housing Administration Fund	784	22,148	12,760	133,105	154,469	155,253
<b>Government National Mortgage Association:</b>						
Guarantees of Mortgage-Backed Securities	100	1,433	2,071	21,154	22,487	22,588
Department of the Interior	-8	2,172	1,941	29,168	31,348	31,339
Department of Justice	16	169	3,108	3,291	3,445	3,461
Department of Labor	396	1,222	2,593	61,174	62,000	62,396
<b>Department of State:</b>						
Foreign Service Retirement and Disability Fund	3	43	27	366	406	409
Other	.....	7	1	13	20	20
Department of Transportation	66	76	-516	2,509	2,520	2,586
Department of the Treasury	-608	1,638	-3,463	17,166	19,411	18,803
<b>Department of Veterans Affairs:</b>						
Veterans Reopened Insurance Fund	-1	-7	-6	32	26	25
National Service Life Insurance	5	45	16	18	58	63
Servicemen'S Group Life Insurance Fund	.....	526	610	3,699	4,225	4,225
<b>Other Defense Civil Programs:</b>						
Uniformed Services Retiree Health Care Fund	727	33,006	32,393	354,219	386,497	387,224
International Assistance Programs	54	515	216	6,368	6,830	6,883
<b>Office of Personnel Management:</b>						
Postal Service Contributions	-381	-3,473	-3,193	32,050	28,958	28,577
<b>Independent Agencies:</b>						
<b>Federal Deposit Insurance Corporation:</b>						
Deposit Insurance Fund	219	-795	-44,489	84,298	83,283	83,503
FSLIC Resolution Fund	4	48	38	931	974	979
Federal Housing Finance Agency	-30	65	58	135	229	200
National Credit Union Administration	241	1,318	467	22,563	23,640	23,881
Postal Service	-1,277	-1,593	2,231	22,032	21,716	20,439
<b>Other</b>						
Treasury Securities	-36	311	-146	12,121	12,469	12,432
Other	27	2,869	434	2,000	4,843	4,870
Total Treasury Securities	1,371	86,744	28,503	875,254	960,628	961,998
<b>Total Federal Funds</b>	<b>1,371</b>	<b>86,744</b>	<b>28,503</b>	<b>875,254</b>	<b>960,628</b>	<b>961,998</b>
<b>Trust Funds:</b>						
<b>Legislative Branch:</b>						
Library of Congress	-1	6	9	57	64	63
United States Tax Court	(**)	1	(**)	13	14	14
Other	-1	3	-4	32	35	35
<b>Judicial Branch:</b>						
Judicial Retirement Funds	-2	189	211	1,992	2,183	2,181
Department of Agriculture	.....	(**)	.....	6	6	6
<b>Department of Defense--Military Programs:</b>						
Voluntary Separation Incentive Fund	-3	-3	-3	42	41	39
Other	-37	-176	-122	1,407	1,268	1,231
<b>Department of Health and Human Services:</b>						
Federal Supplementary Medical Insurance Trust Fund	-34,753	-25,693	25,490	159,537	168,598	133,844
Other	-21,448	13,970	22,865	198,815	234,233	212,785
Department of Homeland Security	46	786	501	11,627	12,367	12,413
Department of the Interior	2	165	-403	304	467	469
<b>Department of Labor:</b>						
Unemployment Trust Fund	2,593	12,957	10,926	81,846	92,209	94,802
Other	21	-8	-16	72	43	64
<b>Department of State:</b>						
Foreign Service Retirement and Disability Fund	24	133	52	21,055	21,164	21,188

**Table 6. Schedule D-Investments of Federal Government Accounts in Federal Securities, August 2024 and Other Periods - Continued**  
 [\$ millions]

Classification	Net Purchases or Sales (-)			Securities Held as Investments Current Fiscal Year		
	This Month	Fiscal Year to Date		Beginning of		Close of This Month
		This Year	Prior Year	This Year	This Month	
Trust Funds: - Continued						
Other	.....	(**)	6	49	49	49
Department of Transportation:						
Airport and Airway Trust Fund	-324	-760	5,750	16,601	16,164	15,841
Highway Trust Fund	-3,167	-12,210	-9,337	115,673	106,630	103,463
Department of the Treasury	-154	-336	-122	4,651	4,468	4,315
Department of Veterans Affairs:						
General Post Fund, National Homes	.....	-20	24	140	120	120
National Service Life Insurance	-18	-225	-236	832	626	607
United States Government Life Insurance Fund	(**)	(**)	(**)	1	1	1
Veterans Special Life Insurance Fund	-13	-131	-95	805	687	674
Corps of Engineers	248	653	1,313	10,755	11,160	11,408
Other Defense Civil Programs:						
Military Retirement Fund	-3,227	228,463	181,283	1,366,845	1,598,535	1,595,308
Other	-4	-92	-29	1,032	944	940
Environmental Protection Agency	-18	284	1,799	12,438	12,740	12,722
National Aeronautics and Space Administration	.....	(**)	(**)	15	16	16
Office of Personnel Management:						
Civil Service Retirement and Disability Fund						
Treasury Securities	-2,817	-15,489	-23,459	1,036,636	1,023,964	1,021,147
Agency Securities	.....	.....	1,875	.....	.....	.....
Employees Life Insurance Fund	1,015	2,417	1,417	52,526	53,929	54,944
Employees and Retired Employees Health Benefits Fund	-145	-1,802	-2,364	25,570	23,913	23,768
Social Security Administration:						
Federal Old-Age and Survivors Insurance Trust Fund	-25,797	-73,425	-32,001	2,673,749	2,626,122	2,600,324
Federal Disability Insurance Trust Fund	967	32,273	26,854	142,906	174,212	175,179
Independent Agencies:						
Harry S Truman Scholarship Foundation	.....	30	2	10	40	40
Japan-United States Friendship Commission	.....	-1	.....	36	35	35
Railroad Retirement Board						
Treasury Securities	-220	258	519	2,611	3,089	2,869
Agency Securities	.....	.....	.....	1	1	1
Other						
Treasury Securities	143	341	337	1,891	2,090	2,233
Total Treasury Securities	-87,088	162,556	211,165	5,942,580	6,192,224	6,105,136
Total Agency Securities	.....	.....	1,875	1	1	1
Total Trust Funds	<b>-87,088</b>	<b>162,556</b>	<b>213,040</b>	<b>5,942,581</b>	<b>6,192,225</b>	<b>6,105,137</b>
Grand Total	<b>-85,718</b>	<b>249,300</b>	<b>241,542</b>	<b>6,817,835</b>	<b>7,152,853</b>	<b>7,067,135</b>

Note: Details may not add to totals due to rounding.

Note: Investments are in Treasury securities unless otherwise noted.

... No Transactions

(\*\*) Less than absolute value of \$500,000

**Table 6. Schedule E-Net Activity, Guaranteed and Direct Loan Financing, August 2024 and Other Periods**

[\$ millions]

Classification	Net Transactions (-) denotes net reduction of asset accounts			Account Balances Current Fiscal Year		
	This Month	Fiscal Year to Date		Beginning of		Close of This Month
		This Year	Prior Year	This Year	This Month	
<b>Guaranteed Loan Financing Activity:</b>						
Department of Agriculture:						
Office of the Secretary:						
Food Supply Chain and Agriculture Pandemic Response	.....	-3	-21	-24	-27	-27
Farm Service Agency:						
Commodity Credit Corporation Export Fund	-1	-20	-90	45	26	24
Agricultural Credit Insurance Fund	-1	-9	-274	-185	-193	-194
Natural Resources Conservation Service:						
Agricultural Resource Conservation Demonstration Program	.....	.....	.....	(**)	(**)	(**)
Rural Housing Service:						
Rural Community Facility Loans	(**)	2	13	-1	1	1
Rural Housing Insurance Fund	30	414	79	2,022	2,406	2,436
Rural Business - Cooperative Service:						
Rural Business and Industry Loans	-42	146	-39	-190	-2	-44
Renewable Energy Guaranteed Loan Account	(**)	28	12	-10	19	19
Biorefinery Assistance Loan Account	.....	8	149	81	88	88
Rural Utilities Service:						
Rural Water and Waste Disposal Fund	(**)	(**)	(**)	-25	-25	-25
Department of Commerce:						
General Administration:						
Emergency Oil, Gas, and Steel Account	.....	.....	.....	5	5	5
Department of Defense--Military Programs	4	4	8	-32	-32	-27
Department of Education:						
Office of Student Financial Assistance:						
Federal Family Education Loans	-85	-6,238	-1,285	-11,836	-17,989	-18,074
Department of Energy:						
Title 17 Innovative Technology Loans	(**)	9	15	-89	-80	-80
Department of Health and Human Services:						
Health Resources and Services Administration:						
Health Center Loans	.....	(**)	(**)	-2	-2	-2
Health Education Assistance Loans	.....	.....	.....	-70	-70	-70
Department of Housing and Urban Development:						
Public and Indian Housing Programs:						
Indian Housing Loans	-1	-13	61	-33	-45	-46
Native Hawaiian Housing Loans	(**)	-1	-1	(**)	-1	-1
Community Planning and Development:						
Community Development Loans	(**)	3	(**)	-5	-2	-2
Housing Programs:						
FHA-Mutual Mortgage Insurance Loans	-259	12,229	3,498	78,353	90,840	90,582
FHA-General and Special Risk Fund	-37	2,120	3,587	11,426	13,583	13,545
Home Ownership Preservation Entity Fund	(**)	-1	3	5	4	4
Government National Mortgage Association:						
Guarantees of Mortgage-Backed Securities	-524	-5,829	-1,462	7,447	2,142	1,617
Department of the Interior:						
Bureau of Indian Affairs and Bureau of Indian Education	(**)	-12	16	-56	-67	-67
Department of Transportation:						
Federal Highway Administration:						
Transportation Infrastructure Finance and Innovation Fund	.....	.....	.....	(**)	(**)	(**)
Maritime Administration:						
Maritime Guaranteed Loan (Title XI) Fund	(**)	63	-136	-235	-172	-172
Department of the Treasury:						
Departmental Offices:						
Air Transportation Stabilization Fund	.....	.....	.....	(**)	(**)	(**)
Troubled Assets Insurance Financing Fund	.....	.....	.....	(**)	(**)	(**)
Troubled Asset Relief Program	.....	(**)	(**)	(**)	.....	.....
Department of Veterans Affairs:						
Veterans Benefits Administration:						
Veterans Housing Benefit Program Fund	-130	3,617	67	-11,683	-7,935	-8,065
International Assistance Programs:						
Agency for International Development:						



**Table 6. Schedule E-Net Activity, Guaranteed and Direct Loan Financing, August 2024 and Other Periods - Continued**  
 [\$ millions]

Classification	Net Transactions (-) denotes net reduction of asset accounts			Account Balances Current Fiscal Year		
	This Month	Fiscal Year to Date		Beginning of		Close of This Month
		This Year	Prior Year	This Year	This Month	
<b>Guaranteed Loan Financing Activity: - Continued</b>						
Ukraine Export Credit Insurance Fund	.....	.....	.....	-267	-267	-267
Loan Guarantees to Israel	.....	.....	151	-863	-863	-863
Urban and Environmental Credit Guaranteed Loans	.....	.....	.....	-38	-38	-38
Microenterprise and Small Enterprise Development	.....	.....	.....	(**)	(**)	(**)
Development Credit Authority Loan Fund	.....	.....	.....	-99	-99	-99
Tunisia Loan Fund	.....	.....	484	-609	-609	-609
Overseas Private Investment Corporation	.....	.....	.....	278	278	278
United States International Development Finance Corporation	65	-344	-142	61	-348	-283
Microenterprise and Small Enterprise Development	.....	.....	.....	(**)	(**)	(**)
Urban and Environmental Credit	1	14	-8	5	18	19
Small Business Administration:						
Business Loan Fund	-210	155	2,343	-51,666	-51,302	-51,511
Disaster Loans	(**)	(**)	.....	.....	.....	(**)
Independent Agencies:						
Export-Import Bank of the United States	-25	-899	-2,143	-4,863	-5,737	-5,762
<b>Net Activity, Guaranteed Loan Financing</b>	<b>-1,216</b>	<b>5,442</b>	<b>4,886</b>	<b>16,848</b>	<b>23,505</b>	<b>22,290</b>
<b>Direct Loan Financing Activity:</b>						
Department of Agriculture:						
Farm Service Agency:						
Agricultural Credit Insurance Fund	115	1,118	179	15,524	16,527	16,642
Farm Storage Facility Loans	-1	39	147	1,377	1,417	1,415
Apple Loans Fund	.....	(**)	(**)	(**)	.....	.....
Emergency Boll Weevil Loan Fund	.....	.....	(**)	.....	.....	.....
Rural Housing Service:						
Rural Community Facility Loans Fund	59	155	34	11,639	11,734	11,793
Rural Housing Insurance Fund	-56	-478	-60	16,201	15,779	15,723
Multifamily Housing Revitalization Loan Account	.....	.....	.....	524	524	524
Rural Business - Cooperative Service:						
Rural Business and Industry Loan Fund	(**)	(**)	(**)	(**)	(**)	(**)
Rural Development Loan Fund	-2	-13	-12	240	229	227
Rural Economic Development Loan Fund	10	16	23	195	201	211
Rural Microenterprise Investment Loans	(**)	-1	1	38	37	37
Rural Utilities Service:						
Rural Water and Waste Disposal Loans	63	126	-117	13,109	13,173	13,236
Rural Electrification and Telecommunications Fund	358	3,825	2,299	57,691	61,157	61,515
Rural Telephone Bank	(**)	-14	-4	54	41	40
Distance Learning and Telemedicine Program	1	50	-3	489	538	539
Rural Development Insurance Fund	.....	.....	.....	1,065	1,065	1,065
Foreign Agricultural Service:						
P.L. 480 Direct Loan Fund	-9	-39	-46	204	174	165
International Debt Reduction	.....	-28	-11	-115	-143	-143
Department of Commerce:						
National Oceanic and Atmospheric Administration:						
Fisheries Finance	-1	1	-38	325	327	326
Department of Defense--Military Programs	137	31	234	1,905	1,799	1,936
Department of Education:						
Office of Postsecondary Education:						
College Housing and Academic Facilities Loans	.....	-1	-3	2	1	1
Historically Black College and University Capital Financing Fund	19	164	63	306	451	470
Office of Student Financial Assistance:						
Federal Direct Student Loans	-29,579	-193,851	230,774	1,000,036	835,764	806,185
Teach Grant Loans	-4	-81	28	527	449	445
Temporary Student Loan Purchase Authority	-121	-8,551	4,565	31,826	23,396	23,275
Department of Energy:						
Advanced Technology Vehicles Manufacturing Loans	.....	184	642	531	715	715
Title 17 Innovative Technology Loans	-50	-110	342	15,525	15,465	15,415
Department of Health and Human Services:						
Consumer Operated and Oriented Plan	-1	-18	-67	-5	-22	-23
Consumer Operated and Oriented Plan Program Contingency Fund	.....	-4	-4	45	42	42

**Table 6. Schedule E-Net Activity, Guaranteed and Direct Loan Financing, August 2024 and Other Periods - Continued**

[\$ millions]

Classification	Net Transactions (-) denotes net reduction of asset accounts			Account Balances Current Fiscal Year		
	This Month	Fiscal Year to Date		Beginning of		Close of This Month
		This Year	Prior Year	This Year	This Month	
<b>Direct Loan Financing Activity: - Continued</b>						
Department of Homeland Security:						
Disaster Assistance Loan Fund	-5	-31	-7	-89	-115	-120
Department of Housing and Urban Development:						
Housing Programs:						
Emergency Homeowners' Relief Fund	-1	-2	2	2	1	(**)
FHA-Mutual Mortgage Insurance Loans	.....	.....	.....	(**)	(**)	(**)
FHA-General and Special Risk Fund	20	451	-64	2,720	3,151	3,170
Green Retrofit Program for Multifamily Housing Fund	(**)	3	3	10	13	13
Department of the Interior:						
Bureau of Reclamation	.....	-3	-3	25	23	23
Bureau of Indian Affairs and Bureau of Indian Education	(**)	(**)	(**)	(**)	(**)	(**)
Assistance to American Samoa Loan Fund	.....	-1	-1	6	5	5
Department of State:						
Administration of Foreign Affairs:						
Repatriation Loans	(**)	3	-1	-1	1	1
Department of Transportation:						
Federal Highway Administration:						
Transportation Infrastructure Finance and Innovation Fund	55	133	4,971	16,727	16,805	16,860
Tiger Tifia Loan Fund	.....	-3	-3	61	58	58
Federal Railroad Administration:						
Railroad Rehabilitation and Improvement Loan Fund	174	580	714	1,393	1,799	1,973
Maritime Administration:						
Maritime Guaranteed Loan (Title XI) FFB Financing Account	4	-6	-6	324	315	318
Department of the Treasury:						
Departmental Offices:						
Community Development Financial Institutions Fund	37	94	77	1,333	1,390	1,427
GSE Mortgage-Backed Securities Purchase Program	.....	.....	.....	4,613	4,613	4,613
Temporary Credit and Liquidity Program	(**)	-99	-81	961	862	862
Troubled Asset Relief Program	.....	(**)	-3	(**)	(**)	(**)
Small Business Lending Program	.....	-140	-1	32	-108	-108
ESF - Economic Stabilization Program	(**)	-9,636	-4,472	14,701	5,066	5,066
Bureau of the Fiscal Service	.....	.....	.....	(**)	(**)	(**)
Department of Veterans Affairs:						
Veterans Benefits Administration:						
Veterans Housing Benefit Program Fund	110	-1,014	-22	324	-800	-690
Native American Veteran Housing Fund	1	5	-1	63	67	68
Transitional Housing Loans	(**)	(**)	(**)	-1	(**)	(**)
Vocational Rehabilitation Loan Fund	(**)	(**)	(**)	(**)	(**)	(**)
Environmental Protection Agency:						
Water Infrastructure Finance and Innovation Loan Program	-2	3,364	1,179	2,936	6,302	6,299
International Assistance Programs:						
International Security Assistance:						
Foreign Military Loan Program	85	-533	-494	477	-141	-56
Military Debt Reduction	.....	.....	.....	40	40	40
Agency for International Development:						
International Debt Reduction	.....	.....	.....	-172	-172	-172
Development Credit Authority Loan Fund	108	190	82	83	166	273
Overseas Private Investment Corporation	.....	.....	.....	2,902	2,902	2,902
International Monetary Programs	.....	.....	.....	-278	-278	-278
United States International Development Finance Corporation	207	1,412	1,639	6,181	7,387	7,594
International Debt Reduction	1	-76	-77	-168	-246	-244
Small Business Administration:						
Business Loan Fund	-4	-36	-33	147	115	111
Disaster Loan Fund	-1,822	-53,367	-49,051	297,713	246,168	244,345
Independent Agencies:						
Export-Import Bank of the United States	-3	-1,068	-1,478	5,906	4,842	4,839
Federal Communications Commission:						
Spectrum Auction Loan Fund	(**)	(**)	(**)	(**)	(**)	(**)
<b>Net Activity, Direct Loan Financing</b>	<b>-30,096</b>	<b>-257,259</b>	<b>191,834</b>	<b>1,528,229</b>	<b>1,301,067</b>	<b>1,270,970</b>

Note: Details may not add to totals due to rounding.

Note: Federal credit programs provide benefits to the public in the form of direct loans and loan guarantees. This table reflects cash transactions and balances of the nonbudgetary financing fund accounts that result from the disbursement of loans, collection of fees, repayment of principal, sale of collateral, interest, and subsidy received from the credit program accounts at

net present value in accordance with the Credit Reform Act of 1990. Unreimbursed costs such as administrative expenses and subsidy payments are reported on a cash basis and included within each program's budgetary totals in Table 5.

... No Transactions

(\*\*) Less than absolute value of \$500,000

**Table 7. Receipts and Outlays of the U.S. Government by Month, Fiscal Year 2024**

[\$ millions]

Classification	Oct.	Nov.	Dec.	Jan.	Feb.	March	April	May	June	July	Aug.	Sept.	Fiscal Year to Date	Comparable Period Prior F.Y.
<b>Receipts:</b>														
Individual Income Taxes	219,908	126,893	178,208	282,579	120,884	160,829	481,927	129,618	184,910	153,607	136,645		2,176,010	1,955,460
Corporation Income Taxes	48,208	7,801	93,925	19,643	4,888	14,812	91,908	30,132	81,354	19,834	8,808		421,312	324,456
<b>Social Insurance and Retirement Receipts:</b>														
Employment and General Retirement	110,154	118,679	139,982	152,008	125,519	138,405	168,854	129,278	180,341	122,737	125,962		1,511,920	1,428,729
Unemployment Insurance	3,411	2,762	371	3,932	3,078	346	11,707	13,383	526	4,406	3,820		47,742	49,154
Other Retirement	645	606	580	583	612	789	702	658	625	633	811		7,244	6,185
Excise Taxes	7,263	7,691	6,972	6,606	6,675	6,831	7,476	7,635	7,097	16,964	7,929		89,140	68,606
Estate and Gift Taxes	4,460	2,321	1,654	3,073	1,550	1,761	4,175	3,561	1,989	1,374	3,493		29,412	31,839
Customs Duties	6,903	6,296	5,744	6,477	6,208	6,064	6,367	5,225	6,323	7,133	7,047		69,788	73,659
Miscellaneous Receipts	2,481	1,781	1,874	2,418	1,712	2,241	3,082	4,157	3,089	3,688	12,026		38,549	33,724
<b>Total--Receipts This Year</b>	<b>403,434</b>	<b>274,830</b>	<b>429,311</b>	<b>477,320</b>	<b>271,126</b>	<b>332,079</b>	<b>776,198</b>	<b>323,647</b>	<b>466,255</b>	<b>330,377</b>	<b>306,540</b>		<b>4,391,116</b>	.....
<b>(On-Budget)</b>	<b>321,848</b>	<b>186,993</b>	<b>327,107</b>	<b>360,321</b>	<b>173,343</b>	<b>224,150</b>	<b>647,317</b>	<b>223,649</b>	<b>327,044</b>	<b>235,959</b>	<b>209,700</b>		<b>3,237,431</b>	.....
<b>(Off-Budget)</b>	<b>81,586</b>	<b>87,837</b>	<b>102,203</b>	<b>116,999</b>	<b>97,783</b>	<b>107,929</b>	<b>128,881</b>	<b>99,998</b>	<b>139,211</b>	<b>94,418</b>	<b>96,840</b>		<b>1,153,685</b>	.....
<i>Total--Receipts Prior Year</i>	<i>318,500</i>	<i>252,111</i>	<i>454,942</i>	<i>447,288</i>	<i>262,114</i>	<i>313,240</i>	<i>638,520</i>	<i>307,487</i>	<i>418,317</i>	<i>276,161</i>	<i>283,130</i>		.....	<i>3,971,811</i>
<i>(On-Budget)</i>	<i>242,627</i>	<i>170,473</i>	<i>358,135</i>	<i>339,029</i>	<i>168,220</i>	<i>210,007</i>	<i>518,378</i>	<i>212,879</i>	<i>273,669</i>	<i>188,272</i>	<i>193,294</i>		.....	<i>2,874,984</i>
<i>(Off-Budget)</i>	<i>75,873</i>	<i>81,638</i>	<i>96,807</i>	<i>108,259</i>	<i>93,894</i>	<i>103,233</i>	<i>120,142</i>	<i>94,608</i>	<i>144,648</i>	<i>87,889</i>	<i>89,836</i>		.....	<i>1,096,828</i>
<b>Outlays:</b>														
Legislative Branch	702	533	508	539	524	527	608	492	553	575	593		6,153	5,937
Judicial Branch	790	745	737	766	720	894	768	832	679	781	889		8,602	8,115
<b>Department of Agriculture:</b>														
Commodity Credit Corporation	3,031	1,855	1,805	726	110	-245	-276	-257	-328	-347	-380		5,694	7,068
Foreign Agricultural Service	250	140	157	238	97	83	180	183	115	-268	123		1,298	2,123
Other	18,938	16,116	18,905	18,043	16,612	15,534	15,131	17,261	15,536	17,784	15,246		185,106	204,712
Department of Commerce	759	1,115	1,483	1,015	804	1,385	1,633	878	1,187	1,119	1,434		12,812	11,015
<b>Department of Defense--Military Programs:</b>														
Military Personnel	38,379	13,354	17,982	8,247	14,461	13,071	13,975	19,151	9,827	13,097	20,867		182,410	164,732
Operation and Maintenance	24,826	26,624	26,671	24,808	24,891	29,579	25,969	28,785	26,613	29,227	32,980		300,974	284,493
<b>International Reconstruction and Other Assistance</b>														
Procurement	9,424	14,150	17,016	12,665	10,996	12,060	9,351	12,760	13,730	11,649	12,286		136,088	127,545
Research, Development, Test, and Evaluation	9,190	11,809	13,509	8,470	10,372	9,702	11,286	12,038	12,766	11,236	11,663		122,040	108,407
Military Construction	1,088	962	1,124	972	876	988	908	1,052	951	1,168	1,143		11,233	9,657
Family Housing	87	117	122	97	107	114	200	111	123	151	175		1,405	1,310
Revolving and Management Funds	468	-267	581	903	-260	976	-745	310	-198	19	-154		1,632	171
Other	-82	-422	57	-155	-109	-224	-385	67	-454	98	-211		-1,818	-876
<b>Total Department of Defense--Military Programs</b>	<b>83,381</b>	<b>66,327</b>	<b>77,063</b>	<b>56,007</b>	<b>61,335</b>	<b>66,268</b>	<b>60,559</b>	<b>74,272</b>	<b>63,358</b>	<b>66,646</b>	<b>78,749</b>		<b>753,966</b>	<b>695,438</b>
Department of Education	18,947	11,696	11,328	15,337	13,696	9,840	25,108	9,710	86,835	9,149	38,894		250,540	-64,373
Department of Energy	4,152	4,013	4,083	3,760	3,872	4,089	3,997	4,716	4,058	3,933	4,545		45,219	29,953
<b>Department of Health and Human Services:</b>														
National Institutes of Health	3,548	4,215	3,609	3,730	3,676	4,065	4,204	4,051	4,218	4,112	4,524		43,952	42,029
<b>Centers for Medicare and Medicaid Services:</b>														
Grants to States for Medicaid	45,806	49,700	52,697	46,113	53,691	56,439	51,019	52,785	51,612	46,696	53,854		560,412	566,849
Federal Hospital Insurance Trust Fund	16,940	35,023	32,681	40,508	34,512	30,617	31,516	56,767	17,814	40,820	50,657		387,854	356,685
Federal Supplementary Medical Insurance Trust Fund	19,527	57,778	47,414	56,608	52,701	52,524	56,410	100,014	19,882	65,482	92,282		620,622	531,203
Other	41,120	40,775	40,461	52,053	40,052	42,402	62,654	44,197	48,622	43,848	45,342		501,526	463,607
Administration for Children and Families	6,227	7,058	6,575	6,764	6,759	7,045	7,068	6,622	6,025	7,631	7,489		75,264	79,774
Other	-43,382	-42,823	-47,962	-59,891	-47,172	-48,713	-69,150	-51,610	-58,600	-50,103	-52,360		-571,766	-521,623
Department of Homeland Security	8,327	6,481	7,533	6,370	7,070	7,855	8,700	6,920	6,455	7,441	6,890		80,043	81,010
Department of Housing and Urban Development	5,742	5,524	6,167	4,160	5,406	8,622	2,989	-8,840	6,125	5,457	6,134		47,485	50,355
Department of the Interior	1,829	1,176	1,225	1,748	1,261	1,049	648	1,809	1,854	1,498	359		14,456	14,012
Department of Justice	3,839	3,641	3,100	3,754	3,523	2,824	4,322	3,789	3,379	3,707	3,661		39,538	40,337
<b>Department of Labor:</b>														
Unemployment Trust Fund	2,940	3,218	3,237	4,239	3,617	3,473	3,448	3,328	3,287	3,384	3,335		37,504	32,362
Other	-4,495	1,340	2,012	1,412	1,661	6,585	1,348	-2,403	971	7,800	8,103		24,334	53,210
Department of State	2,945	2,365	2,428	3,477	2,979	2,721	3,239	2,215	2,271	3,130	3,425		31,193	27,208
<b>Department of Transportation:</b>														
Highway Trust Fund	4,824	4,337	3,838	3,114	2,978	2,980	3,262	5,002	5,159	5,109	6,108		46,711	41,919
Other	4,371	5,118	4,637	4,187	5,149	4,621	4,777	4,914	5,924	4,893	5,134		53,725	54,930
<b>Department of the Treasury:</b>														
Interest on Treasury Debt Securities (Gross)	88,926	79,923	119,161	69,196	76,162	88,654	102,440	103,045	140,238	88,549	92,293		1,048,589	807,836

**Table 7. Receipts and Outlays of the U.S. Government by Month, Fiscal Year 2024 - Continued**

[\$ millions]

Classification	Oct.	Nov.	Dec.	Jan.	Feb.	March	April	May	June	July	Aug.	Sept.	Fiscal Year to Date	Comparable Period Prior F.Y.
<b>Outlays: - Continued</b>														
Other	10,502	10,575	12,940	9,888	53,616	33,470	20,459	13,834	12,201	14,788	15,423		207,696	250,321
<b>Department of Veterans Affairs:</b>														
Compensation and Pensions	1,002	13,217	26,052	1,159	15,720	14,257	14,409	28,524	1,092	14,777	28,720		158,929	125,325
National Service Life	27	15	13	24	38	17	27	24	28	17	19		247	256
Other	13,006	13,217	14,094	13,032	11,459	14,890	17,187	9,986	12,768	13,893	16,528		150,061	132,568
Corps of Engineers	1,014	1,353	1,031	611	702	807	732	971	908	1,047	1,058		10,235	8,634
Other Defense Civil Programs	-1,564	6,029	13,366	2,030	6,178	5,901	3,612	11,077	218	6,753	11,865		65,465	56,742
Environmental Protection Agency	1,000	926	1,316	903	994	1,071	992	1,126	1,245	936	1,342		11,851	11,418
Executive Office of the President	48	46	46	45	53	59	50	55	50	49	74		574	489
General Services Administration	59	-39	650	-799	-300	193	-62	245	-95	22	234		106	-293
<b>International Assistance Programs:</b>														
International Security Assistance	2,240	614	1,679	1,973	625	1,209	955	1,632	878	4,538	1,737		18,080	27,159
Multilateral Assistance	452	59	3	-2	17	15	-91	259	1,781	200	73		2,767	2,742
Agency for International Development	976	1,025	884	1,136	542	1,063	1,065	1,303	818	1,255	1,090		11,156	14,258
Other	-822	2,979	-637	-1,528	-319	-835	1,493	390	-1,007	-339	-1,130		-1,754	-10,134
National Aeronautics and Space Administration	1,976	2,251	2,633	1,677	1,779	2,075	2,105	1,978	2,234	2,058	2,155		22,921	22,475
National Science Foundation	721	655	669	700	727	693	727	715	764	949	1,058		8,376	7,952
Office of Personnel Management	10,913	10,819	10,209	11,287	9,674	9,555	10,682	11,200	10,010	11,758	9,686		115,795	112,955
Small Business Administration	191	134	143	193	72	228	103	31,315	176	215	222		32,992	25,867
<b>Social Security Administration:</b>														
Federal Old-Age and Survivors Insurance Trust Fund (Off-Budget)	104,291	103,764	104,002	107,666	108,393	109,002	109,378	109,753	116,124	110,194	110,746		1,193,313	1,098,957
Federal Disability Insurance Trust Fund (Off-Budget)	12,981	12,599	12,920	13,125	12,820	13,283	13,102	13,052	13,088	13,049	13,349		143,369	139,568
Other	302	5,202	10,275	290	5,114	5,468	5,536	10,611	-12	5,410	10,391		58,587	51,626
Deposit Insurance Fund	14,895	47,175	-2,968	-562	-92	-3,370	-3,352	-194	-5,555	-3,357	-59		42,561	45,073
FSLIC Resolution Fund	-4	-4	-4	-5	-4	-4	-5	-4	-4	-5	-4		-48	-39
<b>Postal Service:</b>														
<b>Off-Budget:</b>														
Public Enterprise Funds	1,209	-254	-607	-529	248	1,489	-73	1	287	-699	1,275		2,348	3,419
Other	36	57	.....	26	.....	10	139	.....	.....	.....	3		271	271
Other	.....	.....	.....	.....	.....	.....	81	.....	.....	.....	.....		81	50
Tennessee Valley Authority	29	354	226	51	-145	-226	229	183	-63	80	-134		584	275
Other	5,385	4,264	3,005	2,599	4,016	3,241	4,098	3,963	-2,276	3,468	3,339		35,102	33,693
<b>Undistributed Offsetting Receipts:</b>														
Employer Share, Employee Retirement	-40,093	-8,147	-7,921	-8,394	-8,488	-9,539	-9,732	-8,943	-8,658	-8,893	-9,929		-128,738	-115,397
Interest Received by Trust Funds	-9,917	-6,755	-50,010	-617	-7,234	-7,134	-12,863	-12,207	-56,919	-5,957	-9,527		-179,141	-164,867
<b>Rents and Royalties on the Outer Continental Shelf Lands</b>														
Other	-839	-674	-222	-699	-597	-389	-915	-761	-90	-916	-307		-6,410	-6,712
Other	(**)	-1	-1	-1	-1	-2	-1	-1	-1	-1	-1		-10	-7
<b>Totals This Year:</b>														
<b>Total Outlays</b>	<b>469,997</b>	<b>588,842</b>	<b>558,665</b>	<b>499,250</b>	<b>567,401</b>	<b>568,635</b>	<b>566,669</b>	<b>670,778</b>	<b>537,220</b>	<b>574,119</b>	<b>686,620</b>		<b>6,288,195</b>	.....
<b>(On-Budget)</b>	<b>366,984</b>	<b>475,132</b>	<b>475,059</b>	<b>395,230</b>	<b>448,054</b>	<b>447,103</b>	<b>461,779</b>	<b>551,111</b>	<b>442,037</b>	<b>464,572</b>	<b>563,817</b>		<b>5,090,879</b>	.....
<b>(Off-Budget)</b>	<b>103,013</b>	<b>113,710</b>	<b>83,606</b>	<b>104,020</b>	<b>119,347</b>	<b>121,532</b>	<b>104,890</b>	<b>119,667</b>	<b>95,183</b>	<b>109,546</b>	<b>122,803</b>		<b>1,197,316</b>	.....
<b>Total-Surplus (+) or Deficit (-)</b>	<b>-66,564</b>	<b>-314,012</b>	<b>-129,354</b>	<b>-21,930</b>	<b>-296,275</b>	<b>-236,556</b>	<b>209,529</b>	<b>-347,131</b>	<b>-70,965</b>	<b>-243,741</b>	<b>-380,080</b>		<b>-1,897,079</b>	.....
<b>(On-Budget)</b>	<b>-45,137</b>	<b>-288,139</b>	<b>-147,952</b>	<b>-34,910</b>	<b>-274,711</b>	<b>-222,953</b>	<b>185,538</b>	<b>-327,462</b>	<b>-114,993</b>	<b>-228,613</b>	<b>-354,118</b>		<b>-1,853,448</b>	.....
<b>(Off-Budget)</b>	<b>-21,427</b>	<b>-25,873</b>	<b>18,598</b>	<b>12,979</b>	<b>-21,564</b>	<b>-13,603</b>	<b>23,991</b>	<b>-19,669</b>	<b>44,028</b>	<b>-15,128</b>	<b>-25,963</b>		<b>-43,631</b>	.....
<b>Total Borrowing from the Public</b>	<b>226,047</b>	<b>261,061</b>	<b>100,278</b>	<b>137,681</b>	<b>302,366</b>	<b>134,803</b>	<b>-34,011</b>	<b>122,097</b>	<b>10,110</b>	<b>319,364</b>	<b>236,307</b>		<b>1,816,102</b>	<b>1,698,737</b>
<b>Total-Outlays Prior Year</b>														
<i>(On-Budget)</i>	<i>406,374</i>	<i>500,646</i>	<i>539,943</i>	<i>486,072</i>	<i>524,548</i>	<i>691,675</i>	<i>462,340</i>	<i>547,835</i>	<i>646,085</i>	<i>496,943</i>	<i>193,875</i>		.....	<i>5,496,336</i>
<i>(Off-Budget)</i>	<i>315,869</i>	<i>399,543</i>	<i>467,639</i>	<i>388,957</i>	<i>411,260</i>	<i>579,980</i>	<i>361,603</i>	<i>430,380</i>	<i>558,489</i>	<i>396,383</i>	<i>80,415</i>		.....	<i>4,390,519</i>
<i>(Off-Budget)</i>	<i>90,505</i>	<i>101,103</i>	<i>72,304</i>	<i>97,115</i>	<i>113,288</i>	<i>111,696</i>	<i>100,736</i>	<i>117,455</i>	<i>87,596</i>	<i>100,560</i>	<i>113,460</i>		.....	<i>1,105,817</i>
<b>Total-Surplus (+) or Deficit (-) Prior Year</b>														
<i>(On-Budget)</i>	<i>-87,874</i>	<i>-248,535</i>	<i>-85,001</i>	<i>-38,784</i>	<i>-262,434</i>	<i>-378,435</i>	<i>176,181</i>	<i>-240,348</i>	<i>-227,768</i>	<i>-220,782</i>	<i>89,256</i>		.....	<i>-1,524,525</i>
<i>(Off-Budget)</i>	<i>-73,242</i>	<i>-229,070</i>	<i>-109,504</i>	<i>-49,928</i>	<i>-243,040</i>	<i>-369,973</i>	<i>156,775</i>	<i>-217,501</i>	<i>-284,820</i>	<i>-208,111</i>	<i>112,880</i>		.....	<i>-1,515,535</i>
<i>(Off-Budget)</i>	<i>-14,632</i>	<i>-19,465</i>	<i>24,503</i>	<i>11,144</i>	<i>-19,394</i>	<i>-8,462</i>	<i>19,406</i>	<i>-22,847</i>	<i>57,052</i>	<i>-12,671</i>	<i>-23,624</i>		.....	<i>-8,990</i>

Note: Details may not add to totals due to rounding.

(\*\*) Less than absolute value of \$500,000

... No Transactions

**Table 8. Trust Fund Impact on Budget Results and Investment Holdings as of August 31, 2024**

[\$ millions]

Classification	This Month			Fiscal Year to Date			Securities Held as Investments Current Fiscal Year		
	Receipts	Outlays	Excess	Receipts	Outlays	Excess	Beginning of		Close of
							This Year	This Month	
<b>Trust Receipts, Outlays, and Investments Held:</b>									
Airport and Airway	1,978	2,255	-277	16,175	18,098	-1,923	16,601	16,164	15,841
Black Lung Disability	24	-21	45	250	145	105	.....	.....	.....
Federal Disability Insurance	14,392	13,349	1,043	175,710	143,369	32,341	142,906	174,212	175,179
Federal Employees Life and Health	.....	-866	866	.....	-539	539	78,097	77,842	78,712
Federal Employees Retirement	6,209	9,016	-2,807	84,013	100,140	-16,127	1,059,696	1,047,324	1,044,529
Federal Hospital Insurance	29,666	50,881	-21,216	407,442	390,284	17,158	194,362	229,690	208,172
Federal Old-Age and Survivors Insurance	85,018	110,746	-25,728	1,119,960	1,193,313	-73,353	2,673,749	2,626,122	2,600,324
Federal Supplementary Medical Insurance	57,493	92,282	-34,789	595,521	620,622	-25,101	159,537	168,598	133,844
Hazardous Substance Superfund	158	215	-57	2,102	1,812	290	11,006	11,188	11,158
Highways	4,814	7,299	-2,485	43,586	58,685	-15,099	115,673	106,630	103,463
Military Advances	5,345	4,100	1,245	46,581	43,424	3,158	.....	.....	.....
Military Retirement	10,286	12,577	-2,291	258,689	71,605	187,085	1,366,845	1,598,535	1,595,308
Railroad Retirement	1,028	1,235	-207	16,583	14,462	2,122	2,612	3,090	2,870
Unemployment	3,883	3,341	542	50,498	37,576	12,922	81,846	92,209	94,802
Veterans Life Insurance	1	33	-32	28	390	-361	1,638	1,314	1,283
All Other Trust	1,007	887	121	8,705	7,601	1,104	38,013	39,306	39,651
<b>Total Trust Fund Receipts and Outlays and Investments Held from Table 6-D</b>	<b>221,300</b>	<b>307,327</b>	<b>-86,027</b>	<b>2,825,845</b>	<b>2,700,985</b>	<b>124,859</b>	<b>5,942,581</b>	<b>6,192,225</b>	<b>6,105,137</b>
Less: Interfund Transactions	83,444	83,444	.....	1,198,912	1,198,912	.....	.....	.....	.....
Trust Fund Receipts and Outlays on the Basis of Tables 4 & 5	137,856	223,883	-86,027	1,626,933	1,502,073	124,859			
<b>Total Federal Fund Receipts and Outlays</b>	<b>168,764</b>	<b>462,817</b>	<b>-294,053</b>	<b>2,765,203</b>	<b>4,787,142</b>	<b>-2,021,938</b>			
Less: Interfund Transactions	81	81	.....	1,020	1,020	.....			
Federal Fund Receipts and Outlays on the Basis of Table 4 & 5	168,684	462,737	-294,053	2,764,183	4,786,122	-2,021,938			
<b>Net Budget Receipts &amp; Outlays</b>	<b>306,540</b>	<b>686,620</b>	<b>-380,080</b>	<b>4,391,116</b>	<b>6,288,195</b>	<b>-1,897,079</b>			

Note: Details may not add to totals due to rounding.

Note: Interfund receipts and outlays are transactions between Federal funds and trust funds such as Federal payments and contributions, and interest and profits on investments in Federal securities. They have no net effect on overall budget

receipts and outlays since the receipt side of such transactions is offset against budget outlays. In this table, Interfund receipts are shown as an adjustment to arrive at total receipts and outlays of trust funds respectively.  
... No Transactions

**Table 9. Summary of Receipts by Source, and Outlays by Function of the U.S. Government, August 2024 and Other Periods**

[\$ millions]

Classification	This Month	Fiscal Year to Date	Comparable Period Prior Fiscal Year
<b>Receipts</b>			
Individual Income Taxes	136,645	2,176,010	1,955,460
Corporation Income Taxes	8,808	421,312	324,456
Social Insurance and Retirement Receipts:			
Employment and General Retirement	125,962	1,511,920	1,428,729
Unemployment Insurance	3,820	47,742	49,154
Other Retirement	811	7,244	6,185
Excise Taxes	7,929	89,140	68,606
Estate and Gift Taxes	3,493	29,412	31,839
Customs Duties	7,047	69,788	73,659
Miscellaneous Receipts	12,026	38,549	33,724
<b>Total</b>	<b>306,540</b>	<b>4,391,116</b>	<b>3,971,811</b>
<b>Net Outlays</b>			
National Defense	83,212	797,822	736,207
International Affairs	4,992	60,354	61,476
General Science, Space, and Technology	3,880	37,915	36,817
Energy	1,343	12,226	-1,299
Natural Resources and Environment	4,692	50,103	43,154
Agriculture	1,753	36,729	33,393
Commerce and Housing Credit	2,757	43,391	54,557
Transportation	12,601	118,038	112,425
Community and Regional Development	5,101	83,057	82,469
Education, Training, Employment, and Social Services	42,027	284,944	-29,704
Health	80,818	824,247	812,220
Medicare	128,679	849,792	729,959
Income Security	67,113	633,292	716,451
Social Security	124,092	1,336,727	1,238,323
Veterans Benefits and Services	45,289	309,786	258,626
Administration of Justice	6,389	75,864	74,039
General Government	1,935	25,671	29,245
Net Interest	80,184	843,384	630,087
Undistributed Offsetting Receipts	-10,236	-135,147	-122,109
<b>Total</b>	<b>686,620</b>	<b>6,288,195</b>	<b>5,496,336</b>

Note: Details may not add to totals due to rounding.

# Explanatory Notes

## 1. Flow of Data into Monthly Treasury Statement

The *Monthly Treasury Statement (MTS)* is assembled from data in the central accounting system. The major sources of data include monthly accounting reports by Federal entities and disbursing officers, and daily reports from the Federal Reserve banks. These reports detail accounting transactions affecting receipts and outlays of the Federal Government and off-budget Federal entities, and their related effect on the assets and liabilities of the U.S. Government. Information is presented in the *MTS* on a modified cash basis.

## 2. Notes on Receipts

Receipts included in the report are classified into the following major categories: (1) budget receipts and (2) offsetting collections (also called applicable receipts). Budget receipts are collections from the public that result from the exercise of the Government's sovereign or governmental powers, excluding receipts offset against outlays. These collections, also called governmental receipts, consist mainly of tax receipts (including social insurance taxes), receipts from court fines, certain licenses, and deposits of earnings by the Federal Reserve System. Refunds of receipts are treated as deductions from gross receipts.

Offsetting collections are from other Government accounts or the public that are of a business-type or market-oriented nature. They are classified into two major categories: (1) offsetting collections credited to appropriations or fund accounts, and (2) offsetting receipts (i.e., amounts deposited in receipt accounts). Collections credited to appropriation or fund accounts normally can be used without appropriation action by Congress. These occur in two instances: (1) when authorized by law, amounts collected for materials or services are treated as reimbursements to appropriations and (2) in the three types of revolving funds (public enterprise, intra governmental, and trust); collections are netted against spending, and outlays are reported as the net amount.

Offsetting receipts in receipt accounts cannot be used without being appropriated. They are subdivided into two categories: (1) proprietary receipts - these collections are from the public and they are offset against outlays by agency and by function, and (2) intra governmental funds - these are payments into receipt accounts from Governmental appropriation or fund accounts. The transactions may be intrabudgetary when the payment and receipt both occur within the budget or from receipts from off-budget Federal entities in those cases where payment is made by a Federal entity whose budget authority and outlays are excluded from the budget totals.

Intrabudgetary transactions are subdivided into three categories: (1) interfund transactions, where the payments are from one fund group (either Federal funds or trust funds) to a receipt account in the other fund group; (2) Federal intrafund transactions, where the payments and receipts both occur within the Federal fund group; and (3) trust intrafund transactions, where the payments and receipts both occur within the trust fund group.

Offsetting receipts are generally deducted from budget authority and outlays by function, by subfunction, or by agency. There are four types of receipts, however, that are deducted from budget totals as undistributed offsetting receipts. They are: (1) agencies' payments (including payments by off-budget Federal entities) as employers into employees retirement funds, (2) interest received by trust funds, (3) rents and royalties on the Outer Continental Shelf lands, and (4) other interest (i.e., interest collected on Outer Continental Shelf money in deposit funds when such money is transferred into the budget).

## 3. Notes on Outlays

Outlays are generally accounted for on the basis of checks issued, electronic funds transferred, or cash payments made. Certain outlays do not require issuance of cash or checks. An example is charges made against appropriations for that part of employees' salaries withheld for taxes or savings bond allotments - these are counted as payments to the employee and credits for whatever purpose the money was withheld. Outlays are stated net of offsetting collections (including receipts of revolving and management funds) and of refunds. Interest on the public debt (public issues) is recognized on the accrual basis. Federal credit programs subject to the Federal Credit Reform Act of 1990 use the cash

basis of accounting and are divided into two components. The portion of the credit activities that involve a cost to the Government (mainly subsidies) is included within the budget program accounts. The remaining portion of the credit activities are in non-budget financing accounts. Outlays of off-budget Federal entities are excluded by law from budget totals. However, they are shown separately and combined with the on-budget outlays to display total Federal outlays.

## 4. Processing

The data on payments and collections are reported by account symbol into the central accounting system. In turn, the data are extracted from this system for use in the preparation of the *MTS*.

There are two major checks which are conducted to assure consistency of the data reported:

1. Verification of payment data. The monthly payment activity reported by Federal entities on the Statements of Transactions is compared to the payment activity of Federal entities as reported by disbursing officers.
2. Verification of collection data. Reported collections appearing on Statements of Transactions are compared to deposits as reported by Federal Reserve Banks.

## 5. Other Sources of Information About Federal Government Financial Activities

- *A Glossary of Terms Used in the Federal Budget Process, 2005* (Available from the U.S. Government Accountability Office, at calling 202-512-6000. This glossary provides a basic reference document of standardized definitions of terms used by the Federal Government in the budget making process).
- *Daily Treasury Statement* (Available on the internet at <https://fiscaldata.treasury.gov/datasets/daily-treasury-statement/operating-cash-balance>). *The Daily Treasury Statement* is published each working day of the Federal Government and provides data on the cash and debt operations of the Treasury.
- *Monthly Statement of the Public Debt of the United States* (Available on the internet at <https://fiscaldata.treasury.gov/datasets/monthly-statement-public-debt/summary-of-treasury-securities-outstanding>). This publication provides detailed information concerning the public debt.
- *Treasury Bulletin* (Available from GPO, Washington, D.C. 20401 on a subscription or single copy and on the internet at <https://www.fiscal.treasury.gov/reports-statements/treasury-bulletin/>). Quarterly, contains a mix of narrative, tables, and charts on Treasury issues, Federal financial operations, international statistics, and special reports.
- Budget of the United States Government, Fiscal Year 20\_\_ (Available from GPO, Washington, D.C. 20401 on a subscription basis only and on the internet at <https://www.govinfo.gov/app/collection/budget>). This publication is a single volume which provides budget information and contains:
  - *Appendix, The Budget of the United States Government, FY 20*
  - *The United States Budget in Brief, FY 20*
  - *Analytical Perspectives*
  - *Historical Tables*
- *Combined Statement of Receipts, Outlays, and Balances of the United States Government* (Available from Bureau of the Fiscal Service, U.S. Department of Treasury, Washington, D.C. 20227 and on the internet at <https://www.fiscal.treasury.gov/reports-statements/combined-statement/>). This report includes budgetary results at the summary level and presents individual receipt and appropriation accounts at the detail level.

**Scheduled Release**

**The release date for the September 2024 Statement is subject  
to completion of year-end reporting requirements.**

Internet service subscribers can access the current issue of the Monthly Treasury Statement through the  
Bureau of the Fiscal Service's website:

[http://www.fiscal.treasury.gov/fsreports/rpt/mthTreasStmnt/mthTreasStmnt\\_home.htm](http://www.fiscal.treasury.gov/fsreports/rpt/mthTreasStmnt/mthTreasStmnt_home.htm)